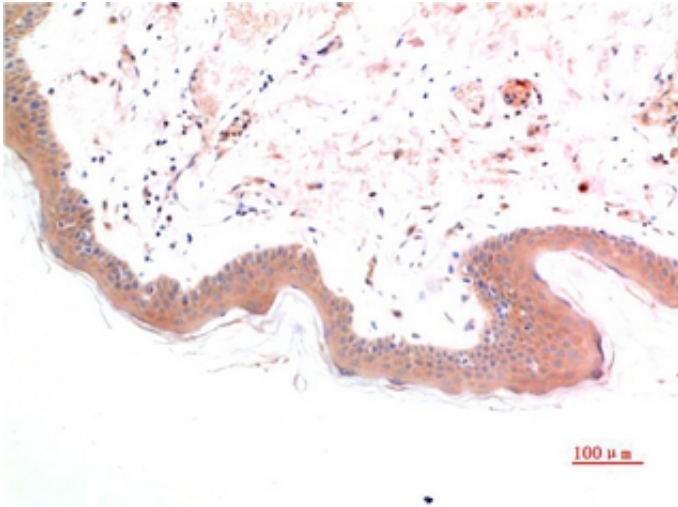


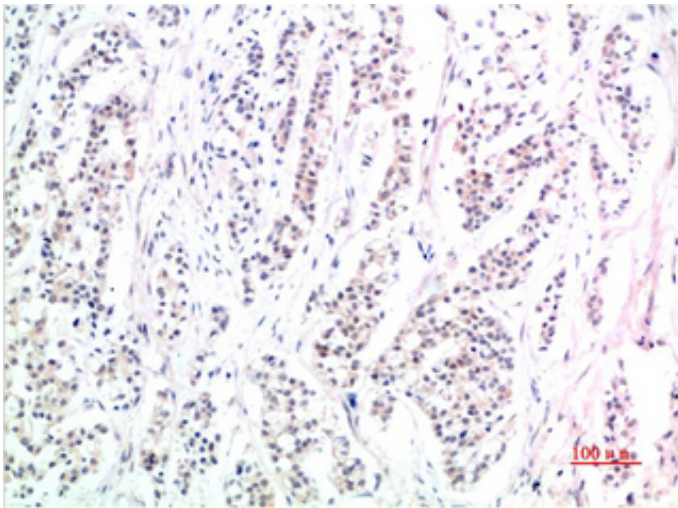
Phospho-Smad3(S425) mouse Monoclonal Antibody(1D9)

Catalog_no :	AM3724
Applications :	IHC-p
Reactivity :	Human,Mouse,Rat
Category :	抗原抗体
Size :	100µg/50µg
Gene_name :	SMAD3 MADH3
Protein_name :	Mothers against decapentaplegic homolog 3 (MAD homolog 3) (Mad3) (Mothers against DPP homolog 3) (hMAD-3) (JV15-2) (SMAD family member 3) (SMAD 3) (Smad3) (hSMAD3)
Humangene_id :	4088
Humanswissprot_no :	P84022
Immunogen :	Synthetic Peptide of Phospho-Smad3(S425)
Specificity :	The antibody detects endogenous Phospho-Smad3(S425) protein
Formulation :	Liquid in PBS containing 50% glycerol, 0.5% BSA and 0.02% sodium azide.
Source :	Mouse
Dilution :	IHC-p 1:50-300
Purification :	The antibody was affinity-purified from rabbit antiserum by affinity-chromatography using epitope-specific immunogen.
Concentration :	1 mg/ml
Storage_stability :	-20°C/1 year
Msds :	MSDS_Antibody.pdf
Other_name :	Mothers against decapentaplegic homolog 3 (MAD homolog 3) (Mad3) (Mothers against DPP homolog 3) (hMAD-3) (JV15-2) (SMAD family member 3) (SMAD 3) (Smad3) (hSMAD3)
Molecular Weight :	52KD

Product Images



Immunohistochemical analysis of paraffin-embedded Human Skin Tissue using Phospho-Smad3(S425) Mouse mAb diluted at 1:200



Immunohistochemical analysis of paraffin-embedded Human Stomach Carcinoma Tissue using Phospho-Smad3(S425) Mouse mAb diluted at 1:200