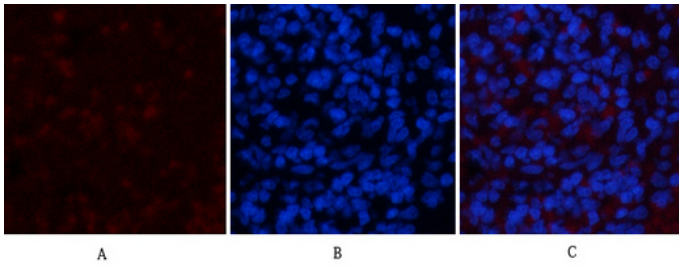


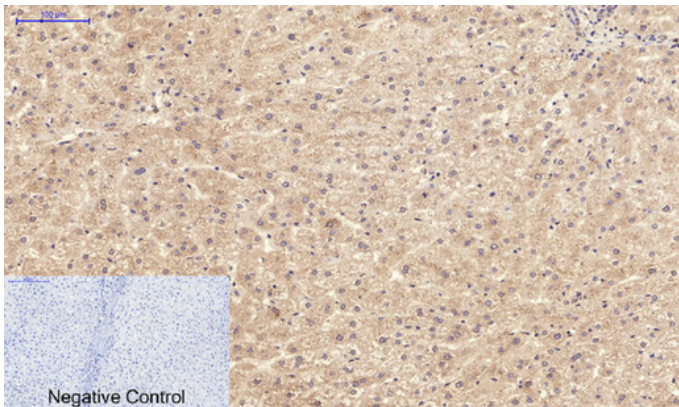
## NBR1 mouse Monoclonal Antibody(7C3)

Catalog_no :	AM3751
Applications :	IF,IHC-p
Reactivity :	Human,Mouse,Rat
Category :	抗原抗体
Size :	100µg/50µg
Gene_name :	NBR1 1A13B KIAA0049 M17S2 MIG19
Protein_name :	Next to BRCA1 gene 1 protein (Cell migration-inducing gene 19 protein) (Membrane component chromosome 17 surface marker 2) (Neighbor of BRCA1 gene 1 protein) (Protein 1A1-3B)
Humangene_id :	<a href="#">4077</a>
Humanswissprot_no :	<a href="#">Q14596</a>
Immunogen :	Recombinant Protein of NBR1
Specificity :	The antibody detects endogenous NBR1 protein
Formulation :	Liquid in PBS containing 50% glycerol, 0.5% BSA and 0.02% sodium azide.
Source :	Mouse
Dilution :	IF: 1:50-200 IHC-p 1:50-300
Purification :	The antibody was affinity-purified from rabbit antiserum by affinity-chromatography using epitope-specific immunogen.
Concentration :	1 mg/ml
Storage_stability :	-20°C/1 year
Msds :	MSDS_Antibody.pdf
Other_name :	Next to BRCA1 gene 1 protein (Cell migration-inducing gene 19 protein) (Membrane component chromosome 17 surface marker 2) (Neighbor of BRCA1 gene 1 protein) (Protein 1A1-3B)
Molecular Weight :	120KD

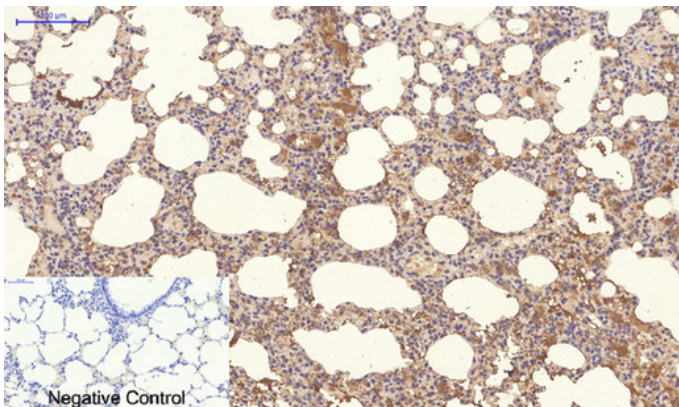
## Product Images



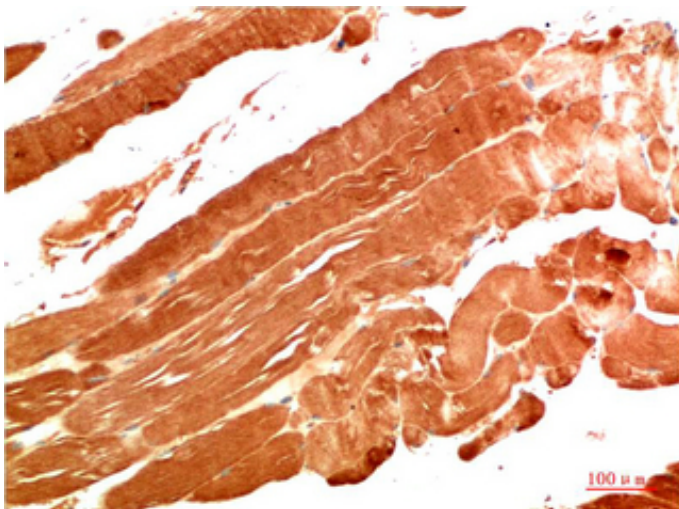
Immunofluorescence analysis of rat-spleen tissue. 1,NBR1 Mouse Monoclonal Antibody(7C3)(red) was diluted at 1:200(4°C,overnight). 2, Cy3 labeled Secondary antibody was diluted at 1:300(room temperature, 50min).3, Picture B: DAPI(blue) 10min. Picture A:Target. Picture B: DAPI. Picture C: merge of A+B



Immunohistochemical analysis of paraffin-embedded Human-liver tissue. 1,NBR1 Mouse Monoclonal Antibody(7C3) was diluted at 1:200(4°C,overnight). 2, Sodium citrate pH 6.0 was used for antibody retrieval(>98°C,20min). 3,Secondary antibody was diluted at 1:200(room temperature, 30min). Negative control was used by secondary antibody only.



Immunohistochemical analysis of paraffin-embedded Rat-lung tissue. 1,NBR1 Mouse Monoclonal Antibody(7C3) was diluted at 1:200(4°C,overnight). 2, Sodium citrate pH 6.0 was used for antibody retrieval(>98°C,20min). 3,Secondary antibody was diluted at 1:200(room temperature, 30min). Negative control was used by secondary antibody only.



Immunohistochemical analysis of paraffin-embedded Human Skeletal Muscle Tissue using NBR1 Mouse mAb diluted at 1:200.