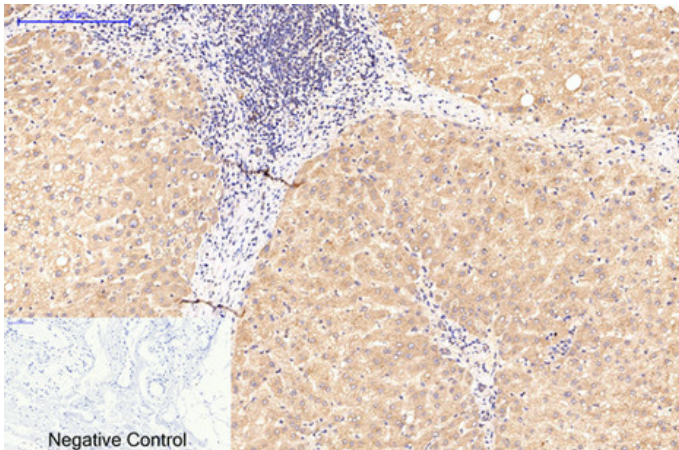




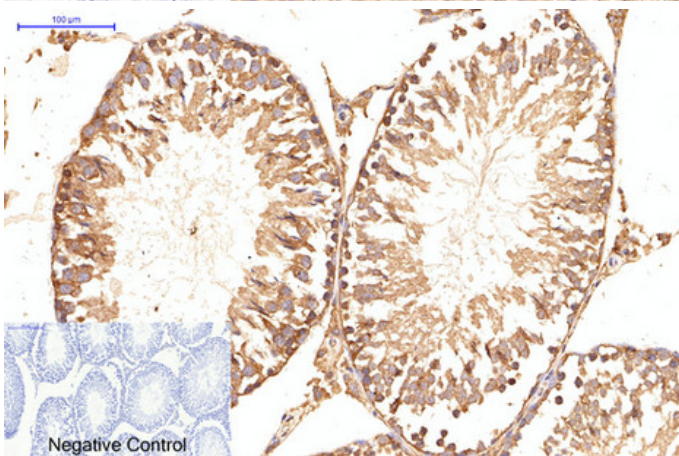
## ATG5 mouse Monoclonal Antibody(3C7)

Catalog_no :	AM3752
Applications :	IF,WB,IHC-p
Reactivity :	Human,Mouse,Rat
Category :	抗原抗体
Size :	100µg/50µg
Gene_name :	ATG5 APG5L ASP
Protein_name :	Autophagy protein 5 (APG5-like) (Apoptosis-specific protein)
Humangene_id	<a href="#">9494</a>
:	
Humanswissprot	<a href="#">Q9H1Y0</a>
_no :	
Immunogen :	Recombinant Protein of ATG5
Specificity :	The antibody detects endogenous ATG5 protein
Formulation :	Liquid in PBS containing 50% glycerol, 0.5% BSA and 0.02% sodium azide.
Source :	Mouse
Dilution :	IF: 1:50-200 WB 1:500-2000,IHC-p 1:50-300
Purification :	The antibody was affinity-purified from rabbit antiserum by affinity-chromatography using epitope-specific immunogen.
Concentration :	1 mg/ml
Storage_stability	-20°C/1 year
:	
Msds :	MSDS_Antibody.pdf
Other_name :	Autophagy protein 5 (APG5-like) (Apoptosis-specific protein)
Molecular Weight :	55KD

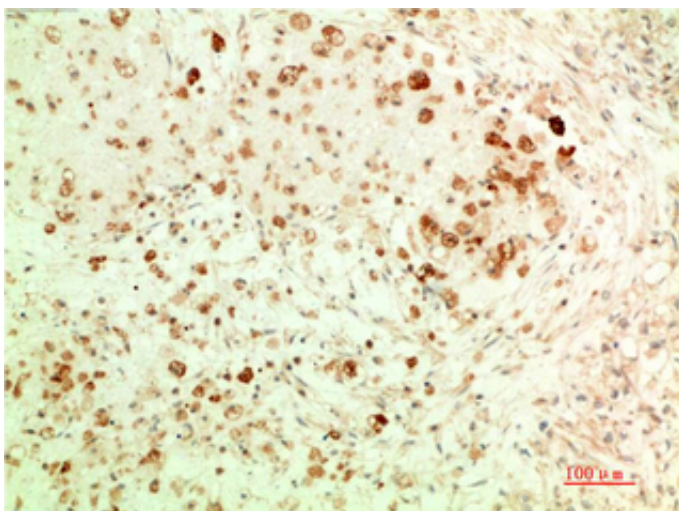
## Product Images



Immunohistochemical analysis of paraffin-embedded Human-breast tissue. 1,ATG5 Mouse Monoclonal Antibody(3C7) was diluted at 1:200(4°C,overnight). 2, Sodium citrate pH 6.0 was used for antibody retrieval(>98°C,20min). 3,Secondary antibody was diluted at 1:200(room temperature, 30min). Negative control was used by secondary antibody only.

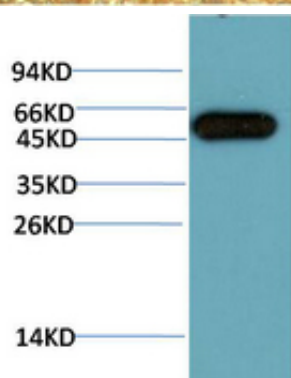
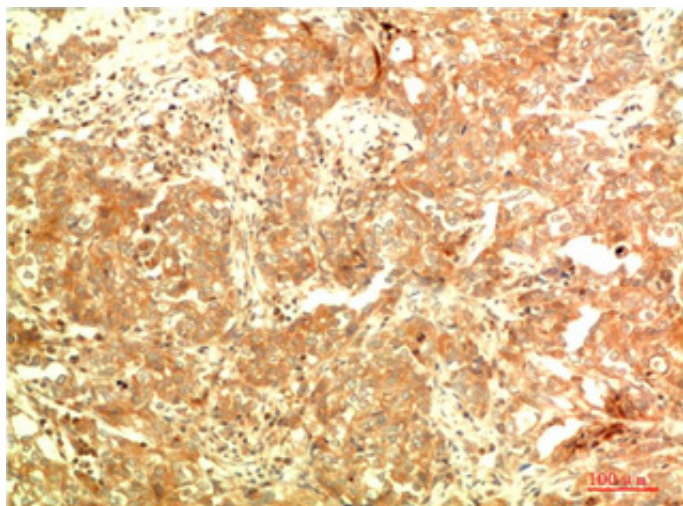


Immunohistochemical analysis of paraffin-embedded Rat-testis tissue. 1,ATG5 Mouse Monoclonal Antibody(3C7) was diluted at 1:200(4°C,overnight). 2, Sodium citrate pH 6.0 was used for antibody retrieval(>98°C,20min). 3,Secondary antibody was diluted at 1:200(room temperature, 30min). Negative control was used by secondary antibody only.



Immunohistochemical analysis of paraffin-embedded Human Ovarian Carcinoma Tissue using ATG5 Mouse mAb diluted at 1:200.

Immunohistochemical analysis of paraffin-embedded Human Breast Carcinoma Tissue using ATG5 Mouse mAb diluted at 1:200.



Western blot analysis of HeLa Cell Lysate using ATG5  
Mouse mAb diluted at 1:10000