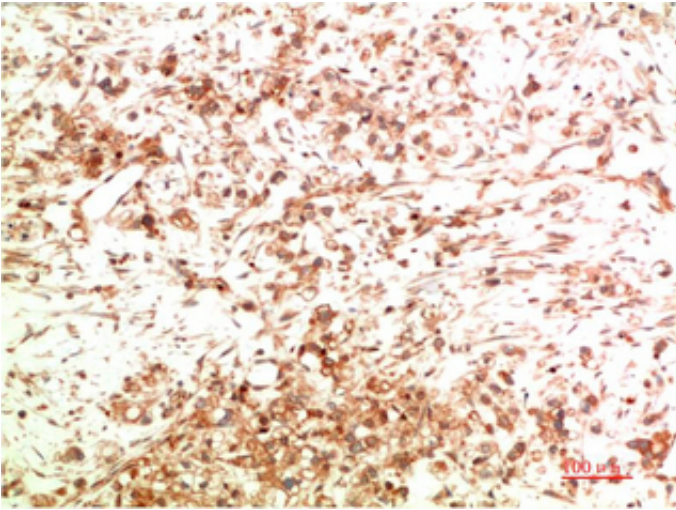




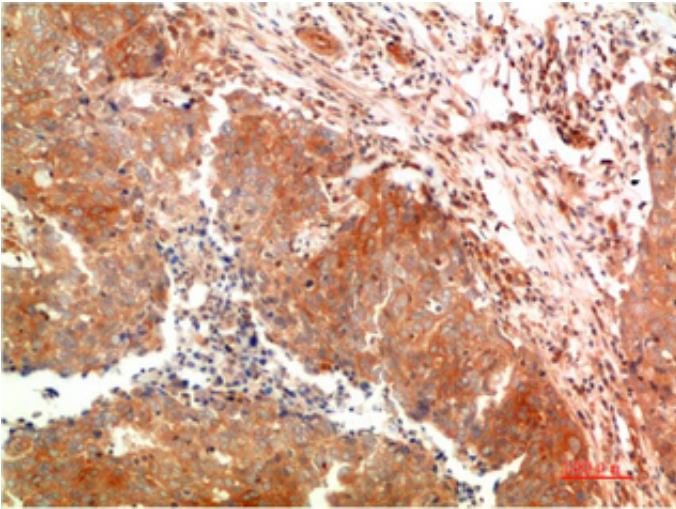
ATG5 mouse Monoclonal Antibody(8B4)

Catalog_no :	AM3753
Applications :	IHC-p
Reactivity :	Human,Mouse,Rat
Category :	抗原抗体
Size :	100µg/50µg
Gene_name :	ATG5 APG5L ASP
Protein_name :	Autophagy protein 5 (APG5-like) (Apoptosis-specific protein)
Humangene_id	9494
:	
Humanswissprot	Q9H1Y0
_no :	
Immunogen :	Recombinant Protein of ATG5
Specificity :	The antibody detects endogenous ATG5 protein
Formulation :	Liquid in PBS containing 50% glycerol, 0.5% BSA and 0.02% sodium azide.
Source :	Mouse
Dilution :	IHC-p 1:50-300
Purification :	The antibody was affinity-purified from rabbit antiserum by affinity-chromatography using epitope-specific immunogen.
Concentration :	1 mg/ml
Storage_stability	-20°C/1 year
:	
Msds :	MSDS_Antibody.pdf
Other_name :	Autophagy protein 5 (APG5-like) (Apoptosis-specific protein)
Molecular Weight :	55KD

Product Images



Immunohistochemical analysis of paraffin-embedded Human Ovarian Carcinoma Tissue using ATG5 Mouse mAb diluted at 1:200.



Immunohistochemical analysis of paraffin-embedded Human Breast Carcinoma Tissue using ATG5 Mouse mAb diluted at 1:200.