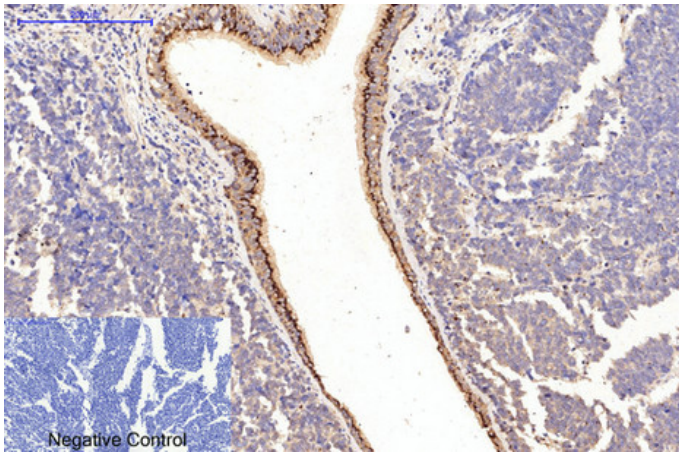




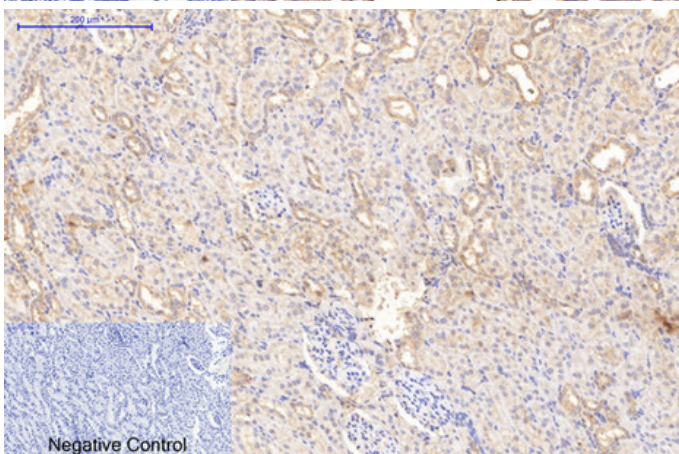
Collagen I mouse Monoclonal Antibody(4H10)

Catalog_no :	AM3764
Applications :	IF,IHC-p
Reactivity :	Human,Mouse,Rat
Category :	抗原抗体
Size :	100µg/50µg
Gene_name :	COL1A1
Protein_name :	Collagen alpha-1(I) chain (Alpha-1 type I collagen)
Humangene_id :	1277/1278
Humanswissprot_no :	P02452
Immunogen :	Synthetic Peptide of Collagen I
Specificity :	The antibody detects endogenous Collagen I protein
Formulation :	Liquid in PBS containing 50% glycerol, 0.5% BSA and 0.02% sodium azide.
Source :	Mouse
Dilution :	IF: 1:50-200 IHC-p 1:50-300
Purification :	The antibody was affinity-purified from mouse antiserum by affinity-chromatography using epitope-specific immunogen.
Concentration :	1 mg/ml
Storage_stability :	-20°C/1 year
Msds :	MSDS_Antibody.pdf
Other_name :	Collagen alpha-1(I) chain (Alpha-1 type I collagen)
Molecular Weight :	139KD

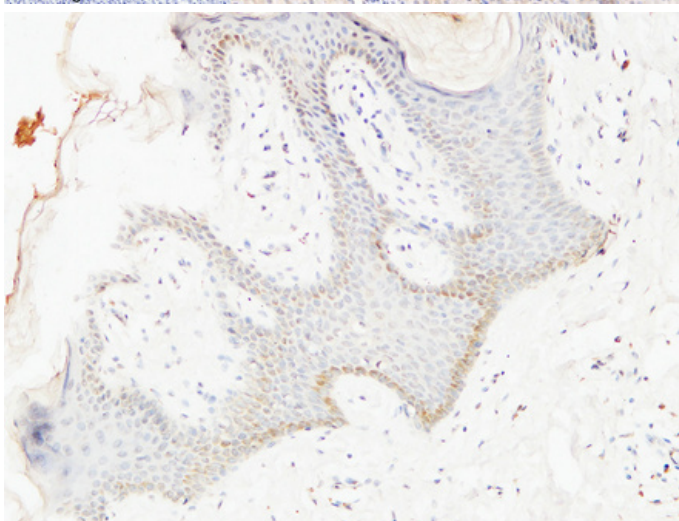
Product Images



Immunohistochemical analysis of paraffin-embedded Human-lung-cancer tissue. 1, Collagen I Mouse Monoclonal Antibody(4H10) was diluted at 1:200(4°C, overnight). 2, Sodium citrate pH 6.0 was used for antibody retrieval(>98°C, 20min). 3, Secondary antibody was diluted at 1:200(room temperature, 30min). Negative control was used by secondary antibody only.

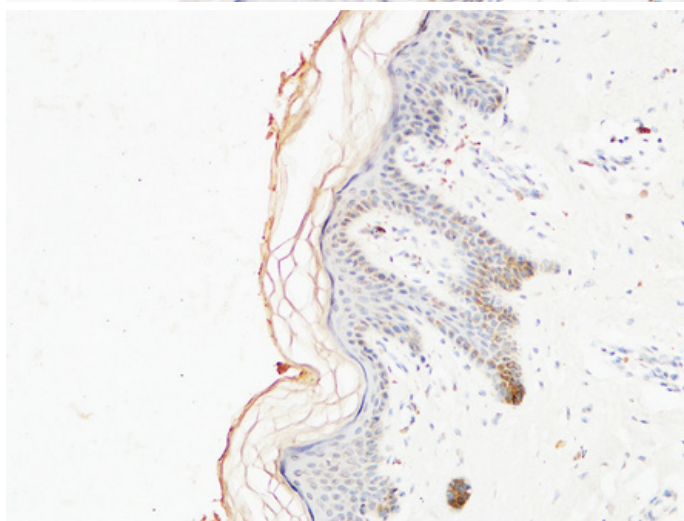
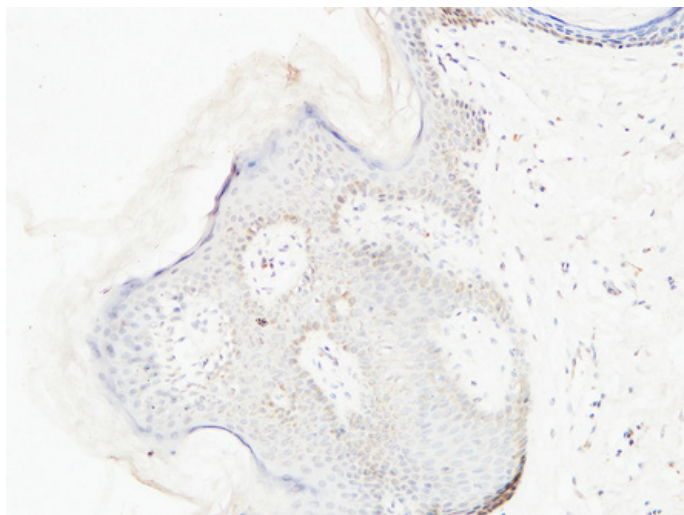


Immunohistochemical analysis of paraffin-embedded Rat-kidney tissue. 1, Collagen I Mouse Monoclonal Antibody(4H10) was diluted at 1:200(4°C, overnight). 2, Sodium citrate pH 6.0 was used for antibody retrieval(>98°C, 20min). 3, Secondary antibody was diluted at 1:200(room temperature, 30min). Negative control was used by secondary antibody only.



Immunohistochemical analysis of paraffin-embedded Human skin. 1, Antibody was diluted at 1:200(4°, overnight). 2, High-pressure and temperature EDTA, pH8.0 was used for antigen retrieval. 3, Secondary antibody was diluted at 1:200(room temperature, 30min).

Immunohistochemical analysis of paraffin-embedded Human skin. 1, Antibody was diluted at 1:200(4°, overnight). 2, High-pressure and temperature EDTA, pH8.0 was used for antigen retrieval. 3, Secondary antibody was diluted at 1:200(room temperature, 30min).



Immunohistochemical analysis of paraffin-embedded Human skin. 1, Antibody was diluted at 1:200(4°,overnight). 2, High-pressure and temperature EDTA, pH8.0 was used for antigen retrieval. 3,Secondary antibody was diluted at 1:200(room temperature, 30min).