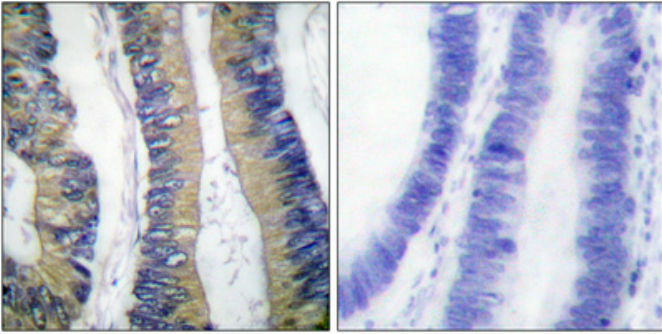


## 4E-BP1 (phospho Thr69) Polyclonal Antibody

Catalog_no :	AP0003
Applications :	WB,IHC-p,ELISA
Reactivity :	Mouse,Rat
Category :	抗原抗体
Size :	100µg/50µg/20µg
Gene_name :	EIF4EBP1
Protein_name :	Eukaryotic translation initiation factor 4E-binding protein 1
Mousegene_id :	<a href="#">13685</a>
Ratgene_id :	<a href="#">116636</a>
Ratswissprot_no :	<a href="#">Q62622</a>
Immunogen :	The antiserum was produced against synthesized peptide derived from mouse 4E-BP1 around the phosphorylation site of Thr69. AA range:35-84
Specificity :	Phospho-4E-BP1 (T69) Polyclonal Antibody detects endogenous levels of 4E-BP1 protein only when phosphorylated at T69.
Formulation :	Liquid in PBS containing 50% glycerol, 0.5% BSA and 0.02% sodium azide.
Source :	Rabbit
Dilution :	Western Blot: 1/500 - 1/2000. Immunohistochemistry: 1/100 - 1/300. ELISA: 1/20000. Not yet tested in other applications.
Purification :	The antibody was affinity-purified from rabbit antiserum by affinity-chromatography using epitope-specific immunogen.
Concentration :	1 mg/ml
Storage_stability :	-20°C/1 year
Msds :	MSDS_Antibody.pdf
Other_name :	EIF4EBP1; Eukaryotic translation initiation factor 4E-binding protein 1; 4E-BP1; eIF4E-binding protein 1; Phosphorylated heat- and acid-stable protein regulated by insulin 1; PHAS-I
Molecular Weight :	12KD

## Product Images



Immunohistochemical analysis of paraffin-embedded Human colon cancer. Antibody was diluted at 1:100(4°,overnight). High-pressure and temperature Tris-EDTA,pH8.0 was used for antigen retrieval. Negative contrl (right) obtaned from antibody was pre-absorbed by immunogen peptide.