

Akt1 (phospho Ser246) Polyclonal Antibody

Catalog_no :	AP0005
Applications :	WB,IHC-p,IF,ELISA
Reactivity :	Human,Mouse,Rat
Category :	抗原抗体
Size :	100µg/50µg/20µg
Gene_name :	AKT1
Protein_name :	RAC-alpha serine/threonine-protein kinase
Humangene_id :	207
Humanswissprot_no :	P31749
Mousegene_id :	11651
Mouseswissprot_no :	P31750
Ratgene_id :	24185
Ratswissprot_no :	P47196
Immunogen :	The antiserum was produced against synthesized peptide derived from human Akt around the phosphorylation site of Ser246. AA range:212-261
Specificity :	Phospho-Akt1 (S246) Polyclonal Antibody detects endogenous levels of Akt1 protein only when phosphorylated at S246.
Formulation :	Liquid in PBS containing 50% glycerol, 0.5% BSA and 0.02% sodium azide.
Source :	Rabbit
Dilution :	Western Blot: 1/500 - 1/2000. Immunohistochemistry: 1/100 - 1/300. Immunofluorescence: 1/200 - 1/1000. ELISA: 1/5000. Not yet tested in other applications.
Purification :	The antibody was affinity-purified from rabbit antiserum by affinity-chromatography using epitope-specific immunogen.
Concentration :	1 mg/ml
Storage_stability :	-20°C/1 year

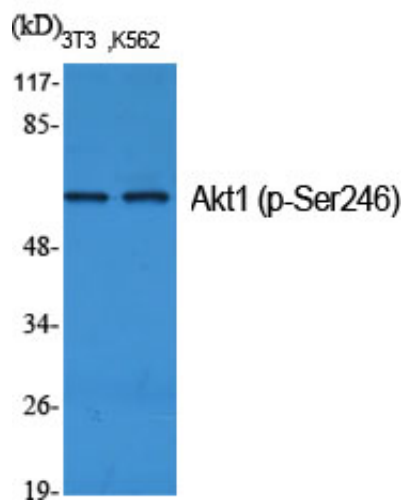


MsdS : MSDS_Antibody.pdf

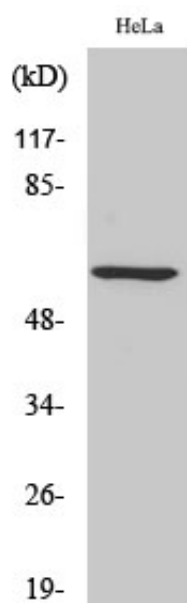
Other_name : AKT1; PKB; RAC; RAC-alpha serine/threonine-protein kinase; Protein kinase B; PKB; Protein kinase B alpha; PKB alpha; Proto-oncogene c-Akt; RAC-PK-alpha

Molecular Weight : 56KD

Product Images

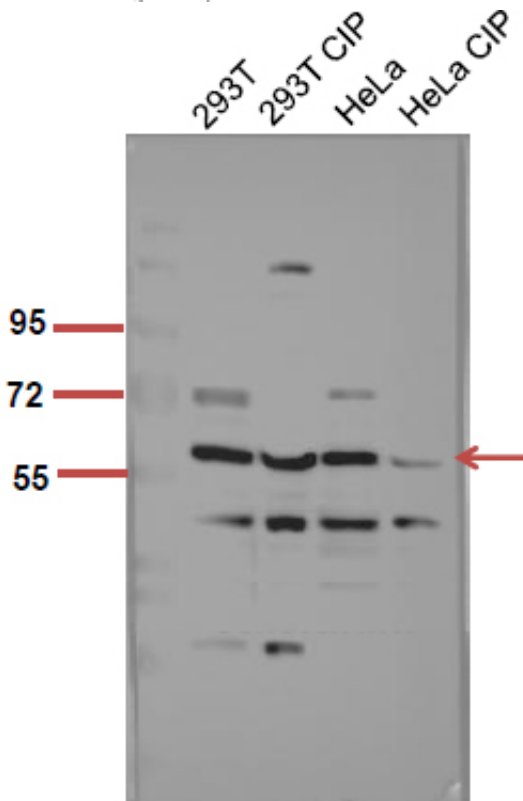
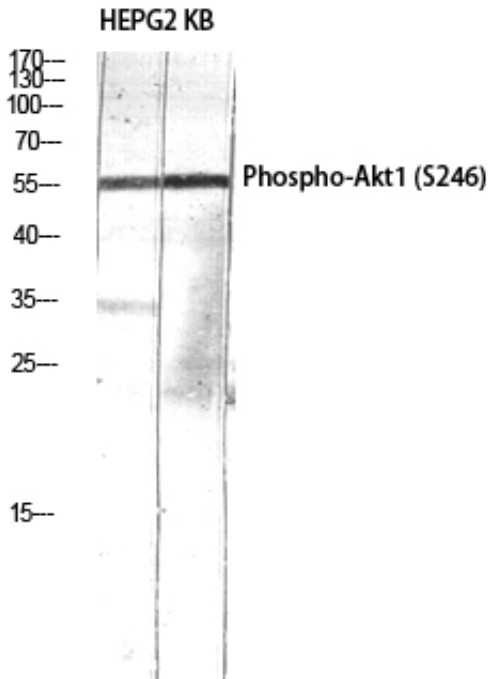


Western Blot analysis of various cells using Phospho-Akt1 (S246) Polyclonal Antibody diluted at 1 : 1000



Western Blot analysis of HeLa cells using Phospho-Akt1 (S246) Polyclonal Antibody diluted at 1 : 1000

Western Blot analysis of HEPG2 KB using Phospho-Akt1 (S246) Polyclonal Antibody diluted at 1 : 1000



The picture was kindly provided by our customer, antibody was diluted at 1:500