

## Akt (phospho Thr308) Polyclonal Antibody

Catalog_no :	AP0007
Applications :	WB,IHC-p,ELISA
Reactivity :	Human,Mouse,Rat,Monkey
Category :	抗原抗体
Size :	100µg/50µg/20µg
Gene_name :	AKT1/AKT2/AKT3
Protein_name :	RAC-alpha serine/threonine-protein kinase/RAC-beta serine/threonine-protein kinase/RAC-gamma serine/threonine-protein kinase
Humangene_id :	<a href="#">207/208/10000</a>
Humanswissprot_no :	<a href="#">P31749/P31751/Q9Y243</a>
Mousegene_id :	<a href="#">11651/11652/23797</a>
Ratgene_id :	<a href="#">24185/25233/29414</a>
Ratswissprot_no :	<a href="#">P47196/P47197/Q63484</a>
Immunogen :	The antiserum was produced against synthesized peptide derived from human Akt around the phosphorylation site of Thr308. AA range:276-325
Specificity :	Phospho-Akt (T308) Polyclonal Antibody detects endogenous levels of Akt protein only when phosphorylated at T308.
Formulation :	Liquid in PBS containing 50% glycerol, 0.5% BSA and 0.02% sodium azide.
Source :	Rabbit
Dilution :	Western Blot: 1/500 - 1/2000. Immunohistochemistry: 1/100 - 1/300. ELISA: 1/10000. Not yet tested in other applications.
Purification :	The antibody was affinity-purified from rabbit antiserum by affinity-chromatography using epitope-specific immunogen.
Concentration :	1 mg/ml
Storage_stability :	-20°C/1 year
Msds :	<a href="#">MSDS_Antibody.pdf</a>



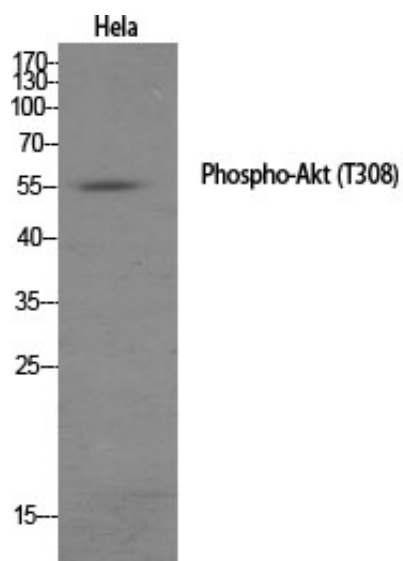
Other\_name : AKT1; PKB; RAC; RAC-alpha serine/threonine-protein kinase; Protein kinase B; PKB; Protein kinase B alpha; PKB alpha; Proto-oncogene c-Akt; RAC-PK-alpha; AKT2; RAC-beta serine/threonine-protein kinase; Protein kinase Akt-2; Protein kinase B

---

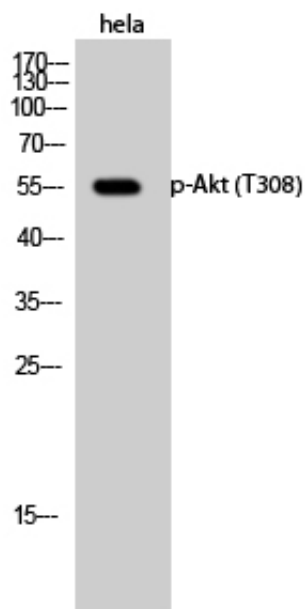
Molecular Weight : 60KD

---

## Product Images



Western Blot analysis of various cells using Phospho-Akt (T308) Polyclonal Antibody diluted at 1 : 1000



Western Blot analysis of hela cells using Phospho-Akt (T308) Polyclonal Antibody diluted at 1 : 1000