

Akt1 (phospho Thr450) Polyclonal Antibody

Catalog_no :	AP0008
Applications :	WB,IHC-p,ELISA
Reactivity :	Human,Mouse,Rat
Category :	抗原抗体
Size :	100µg/50µg/20µg
Gene_name :	AKT1
Protein_name :	RAC-alpha serine/threonine-protein kinase
Humangene_id :	207
Humanswissprot_no :	P31749
Mousegene_id :	11651
Mouseswissprot_no :	P31750
Ratgene_id :	24185
Ratswissprot_no :	P47196
Immunogen :	The antiserum was produced against synthesized peptide derived from human Akt1 around the phosphorylation site of Thr450. AA range:416-465
Specificity :	Phospho-Akt1 (T450) Polyclonal Antibody detects endogenous levels of Akt1 protein only when phosphorylated at T450.
Formulation :	Liquid in PBS containing 50% glycerol, 0.5% BSA and 0.02% sodium azide.
Source :	Rabbit
Dilution :	Western Blot: 1/500 - 1/2000. Immunohistochemistry: 1/100 - 1/300. ELISA: 1/5000. Not yet tested in other applications.
Purification :	The antibody was affinity-purified from rabbit antiserum by affinity-chromatography using epitope-specific immunogen.
Concentration :	1 mg/ml
Storage_stability :	-20°C/1 year

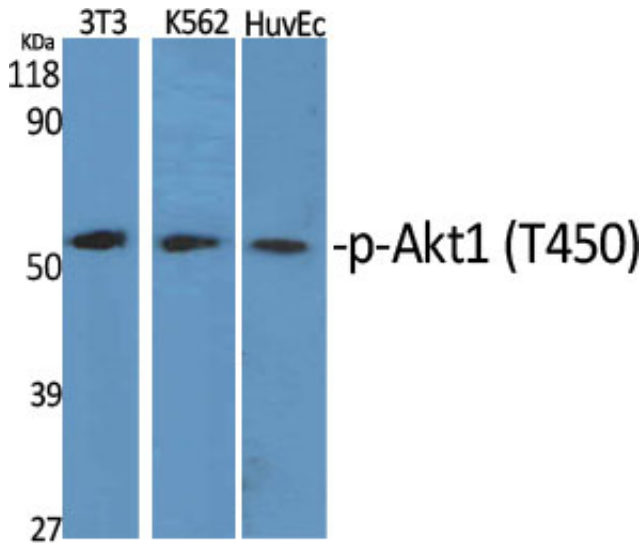


MsdS : MSDS_Antibody.pdf

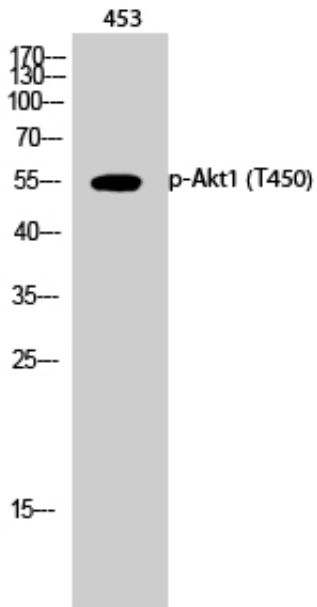
Other_name : AKT1; PKB; RAC; RAC-alpha serine/threonine-protein kinase; Protein kinase B; PKB; Protein kinase B alpha; PKB alpha; Proto-oncogene c-Akt; RAC-PK-alpha

Molecular Weight : 55KD

Product Images

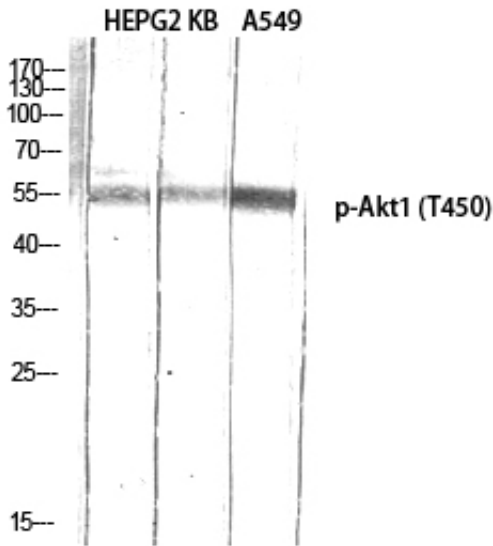


Western Blot analysis of various cells using Phospho-Akt1 (T450) Polyclonal Antibody diluted at 1 : 1000

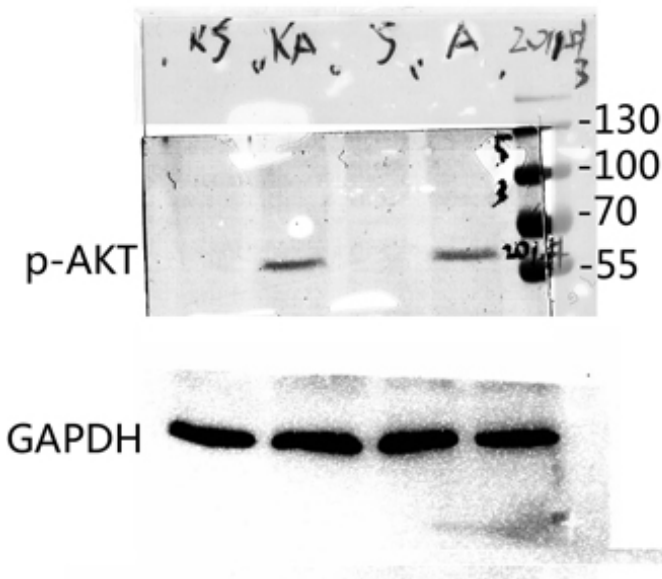


Western Blot analysis of 453 cells using Phospho-Akt1 (T450) Polyclonal Antibody diluted at 1 : 1000

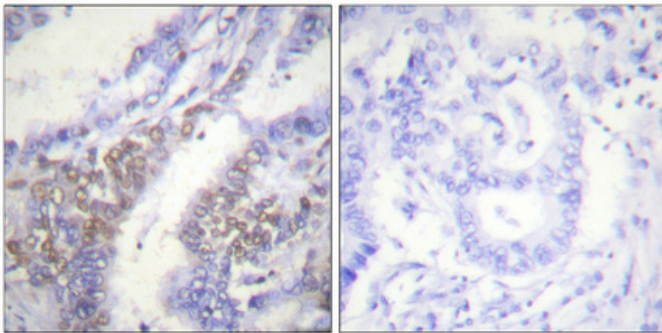
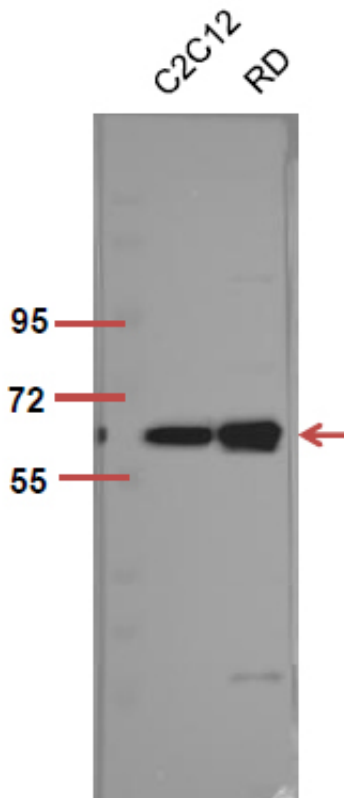
Western Blot analysis of HEPG2 KB A549 using Phospho-Akt1 (T450) Polyclonal Antibody diluted at 1 : 1000



Western blot analysis of various lysis using Phospho-Akt1 (T450) Polyclonal Antibody diluted at 1 : 1000. Secondary antibody was diluted at 1:20000



The picture was kindly provided by our customer, antibody was diluted at 1:500



Immunohistochemical analysis of paraffin-embedded Human lung cancer. Antibody was diluted at 1:100(4°, overnight). High-pressure and temperature Tris-EDTA, pH8.0 was used for antigen retrieval. Negative control (right) obtained from antibody was pre-absorbed by immunogen peptide.