

## AP-1 (phospho Thr239) Polyclonal Antibody

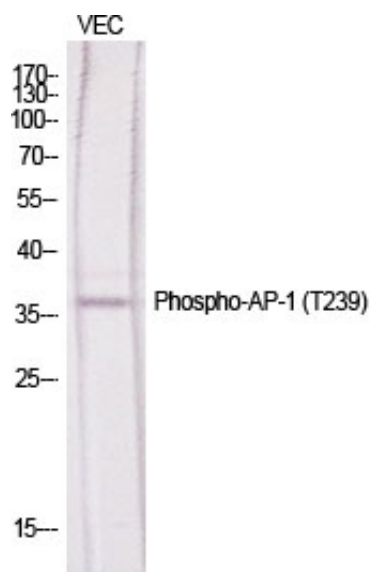
Catalog_no :	AP0015
Applications :	WB,IHC-p,IP,ELISA
Reactivity :	Human,Mouse,Rat
Category :	抗原抗体
Size :	100µg/50µg/20µg
Gene_name :	JUN
Protein_name :	Transcription factor AP-1
Humangene_id :	<a href="#">3725</a>
Humanswissprot_no :	<a href="#">P05412</a>
Mousegene_id :	<a href="#">16476</a>
Mouseswissprot_no :	<a href="#">P05627</a>
Ratgene_id :	<a href="#">24516</a>
Ratswissprot_no :	<a href="#">P17325</a>
Immunogen :	The antiserum was produced against synthesized peptide derived from human c-Jun around the phosphorylation site of Thr239. AA range:206-255
Specificity :	Phospho-AP-1 (T239) Polyclonal Antibody detects endogenous levels of AP-1 protein only when phosphorylated at T239.
Formulation :	Liquid in PBS containing 50% glycerol, 0.5% BSA and 0.02% sodium azide.
Source :	Rabbit
Dilution :	Western Blot: 1/500 - 1/2000. Immunohistochemistry: 1/100 - 1/300. Immunoprecipitation: 2-5 ug/mg lysate. ELISA: 1/20000. Not yet tested in other applications.
Purification :	The antibody was affinity-purified from rabbit antiserum by affinity-chromatography using epitope-specific immunogen.
Concentration :	1 mg/ml
Storage_stability :	-20°C/1 year



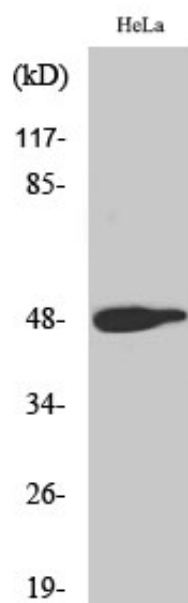
Msd : [MSDS\\_Antibody.pdf](#)

Other\_name : [JUN; Transcription factor AP-1; Activator protein 1; AP1; Proto-oncogene c-Jun; V-jun avian sarcoma virus 17 oncogene homolog; p39](#)

## Product Images



Western Blot analysis of various cells using Phospho-AP-1 (T239) Polyclonal Antibody diluted at 1 : 500



Western Blot analysis of HeLa cells using Phospho-AP-1 (T239) Polyclonal Antibody diluted at 1 : 500