

ASK 1 (phospho Ser966) Polyclonal Antibody

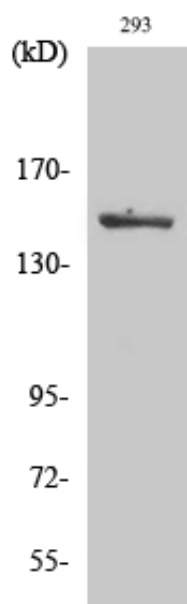
Catalog_no :	AP0022
Applications :	WB,IHC-p,ELISA
Reactivity :	Human,Mouse,Rat
Category :	抗原抗体
Size :	100µg/50µg/20µg
Gene_name :	MAP3K5
Protein_name :	Mitogen-activated protein kinase kinase kinase 5
Humangene_id :	4217
Humanswissprot_no :	Q99683
Mousegene_id :	26408
Mouseswissprot_no :	O35099
Immunogen :	The antiserum was produced against synthesized peptide derived from human ASK1 around the phosphorylation site of Ser966. AA range:932-981
Specificity :	Phospho-ASK 1 (S966) Polyclonal Antibody detects endogenous levels of ASK 1 protein only when phosphorylated at S966.
Formulation :	Liquid in PBS containing 50% glycerol, 0.5% BSA and 0.02% sodium azide.
Source :	Rabbit
Dilution :	Western Blot: 1/500 - 1/2000. Immunohistochemistry: 1/100 - 1/300. ELISA: 1/20000. Not yet tested in other applications.
Purification :	The antibody was affinity-purified from rabbit antiserum by affinity-chromatography using epitope-specific immunogen.
Concentration :	1 mg/ml
Storage_stability :	-20°C/1 year
Msds :	MSDS_Antibody.pdf
Other_name :	MAP3K5; ASK1; MAPKKK5; MEKK5; Mitogen-activated protein kinase kinase kinase 5; Apoptosis signal-regulating kinase 1; ASK-1; MAPK/ERK kinase kinase 5; MEK kinase 5; MEKK 5



Molecular
Weight :

155KD

Product Images



Western Blot analysis of various cells using Phospho-ASK 1 (S966) Polyclonal Antibody