

## ATF-2 (phospho Ser62) Polyclonal Antibody

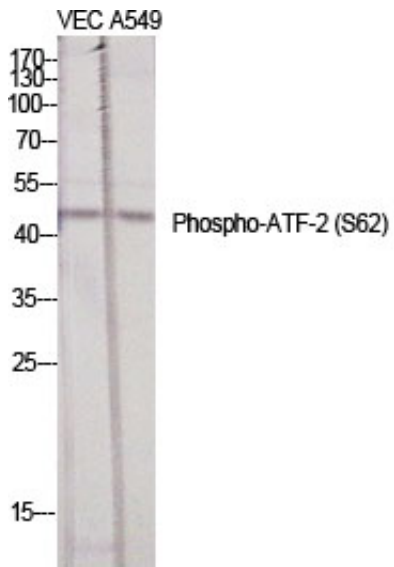
|                     |   |
|---------------------|---|
| Catalog_no :        | AP0024  |
| Applications :      | WB,IHC-p,IP,ELISA   |
| Reactivity :        | Human,Mouse,Rat   |
| Category :          | 抗原抗体  |
| Size :              | 100µg/50µg/20µg   |
| Gene_name :         | ATF2  |
| Protein_name :      | Cyclic AMP-dependent transcription factor ATF-2   |
| Humangene_id :      | <a href="#">1386</a>  |
| Humanswissprot_no : | <a href="#">P15336</a>  |
| Mousegene_id :      | <a href="#">1.00048e+008</a>  |
| Mouseswissprot_no : | <a href="#">P16951</a>  |
| Ratgene_id :        | <a href="#">81647</a>   |
| Ratswissprot_no :   | <a href="#">Q00969</a>  |
| Immunogen :         | The antiserum was produced against synthesized peptide derived from human ATF2 around the phosphorylation site of Ser62 or 44. AA range:29-78                   |
| Specificity :       | Phospho-ATF-2 (S62) Polyclonal Antibody detects endogenous levels of ATF-2 protein only when phosphorylated at S62.   |
| Formulation :       | Liquid in PBS containing 50% glycerol, 0.5% BSA and 0.02% sodium azide.   |
| Source :            | Rabbit  |
| Dilution :          | Western Blot: 1/500 - 1/2000. Immunohistochemistry: 1/100 - 1/300. Immunoprecipitation: 2-5 ug/mg lysate. ELISA: 1/20000. Not yet tested in other applications. |
| Purification :      | The antibody was affinity-purified from rabbit antiserum by affinity-chromatography using epitope-specific immunogen.   |
| Concentration :     | 1 mg/ml   |
| Storage_stability : | -20°C/1 year  |



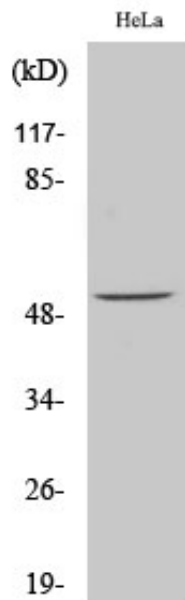
Msd : [MSDS\\_Antibody.pdf](#)

Other\_name : [ATF2; CREB2; CREBP1; Cyclic AMP-dependent transcription factor ATF-2; cAMP-dependent transcription factor ATF-2; Activating transcription factor 2; Cyclic AMP-responsive element-binding protein 2; CREB-2; cAMP-responsive element-binding pro](#)

## Product Images



Western Blot analysis of various cells using Phospho-ATF-2 (S62) Polyclonal Antibody diluted at 1 : 1000



Western Blot analysis of HeLa cells using Phospho-ATF-2 (S62) Polyclonal Antibody diluted at 1 : 1000