

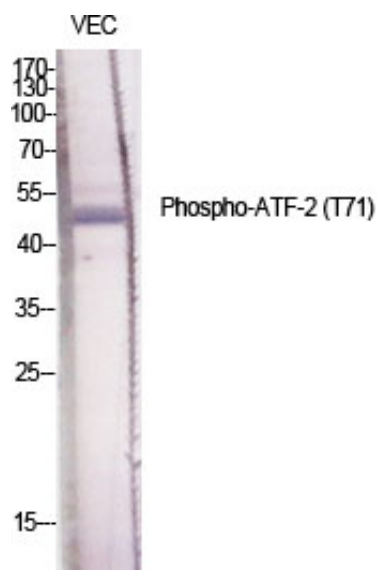
ATF-2 (phospho Thr71) Polyclonal Antibody

Catalog_no :	AP0026
Applications :	WB,IHC-p,IP,ELISA
Reactivity :	Human,Mouse,Rat
Category :	抗原抗体
Size :	100µg/50µg/20µg
Gene_name :	ATF2
Protein_name :	Cyclic AMP-dependent transcription factor ATF-2
Humangene_id :	1386
Humanswissprot_no :	P15336
Mousegene_id :	1.00048e+008
Mouseswissprot_no :	P16951
Ratgene_id :	81647
Ratswissprot_no :	Q00969
Immunogen :	The antiserum was produced against synthesized peptide derived from human ATF2 around the phosphorylation site of Thr71 or 53. AA range:38-87
Specificity :	Phospho-ATF-2 (T71) Polyclonal Antibody detects endogenous levels of ATF-2 protein only when phosphorylated at T71.
Formulation :	Liquid in PBS containing 50% glycerol, 0.5% BSA and 0.02% sodium azide.
Source :	Rabbit
Dilution :	Western Blot: 1/500 - 1/2000. Immunohistochemistry: 1/100 - 1/300. Immunoprecipitation: 2-5 ug/mg lysate. ELISA: 1/20000. Not yet tested in other applications.
Purification :	The antibody was affinity-purified from rabbit antiserum by affinity-chromatography using epitope-specific immunogen.
Concentration :	1 mg/ml
Storage_stability :	-20°C/1 year

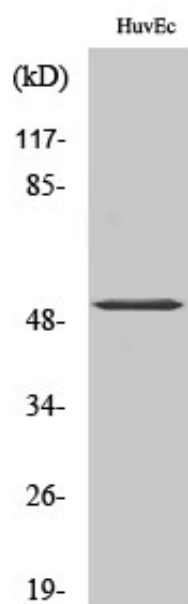


MsdS :	<u>MSDS_Antibody.pdf</u>
Other_name :	<u>ATF2; CREB2; CREBP1; Cyclic AMP-dependent transcription factor ATF-2; cAMP-dependent transcription factor ATF-2; Activating transcription factor 2; Cyclic AMP-responsive element-binding protein 2; CREB-2; cAMP-responsive element-binding pro</u>
Molecular Weight :	<u>52KD</u>

Product Images



Western Blot analysis of various cells using Phospho-ATF-2 (T71) Polyclonal Antibody diluted at 1 : 1000



Western Blot analysis of HuvEc cells using Phospho-ATF-2 (T71) Polyclonal Antibody diluted at 1 : 1000