

## Bad (phospho Ser112) Polyclonal Antibody

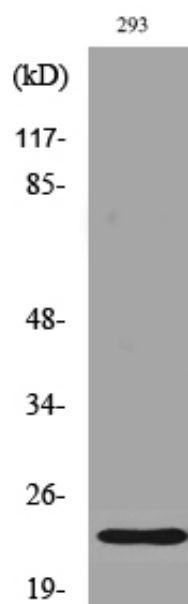
Catalog_no :	AP0028
Applications :	WB,IHC-p,ELISA
Reactivity :	Human,Mouse,Rat
Category :	抗原抗体
Size :	100µg/50µg/20µg
Gene_name :	BAD
Protein_name :	Bcl2 antagonist of cell death
Humangene_id	<a href="#">572</a>
:	
Humanswissprot	<a href="#">Q92934</a>
_no :	
Mousegene_id :	<a href="#">12015</a>
Mouseswissprot	<a href="#">Q61337</a>
_no :	
Ratgene_id :	<a href="#">64639</a>
Ratswissprot_no	<a href="#">O35147</a>
:	
Immunogen :	The antiserum was produced against synthesized peptide derived from human BAD around the phosphorylation site of Ser112. AA range:78-127
Specificity :	Phospho-Bad (S112) Polyclonal Antibody detects endogenous levels of Bad protein only when phosphorylated at S112.
Formulation :	Liquid in PBS containing 50% glycerol, 0.5% BSA and 0.02% sodium azide.
Source :	Rabbit
Dilution :	Western Blot: 1/500 - 1/2000. Immunohistochemistry: 1/100 - 1/300. ELISA: 1/5000. Not yet tested in other applications.
Purification :	The antibody was affinity-purified from rabbit antiserum by affinity-chromatography using epitope-specific immunogen.
Concentration :	1 mg/ml
Storage_stability	-20°C/1 year
:	



MsdS : [MSDS\\_Antibody.pdf](#)

Other\_name : [BAD; BBC6; BCL2L8; Bcl2 antagonist of cell death; BAD; Bcl-2-binding component 6; Bcl-2-like protein 8; Bcl-L-8; Bcl-XL/Bcl-2-associated death promoter](#)

## Product Images



Western Blot analysis of various cells using Phospho-Bad (S112) Polyclonal Antibody