

Bad (phospho Ser155) Polyclonal Antibody

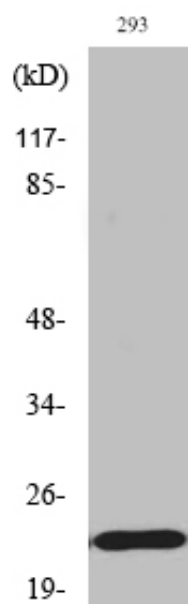
| | |
|-------------------|--|
| Catalog_no : | AP0030 |
| Applications : | WB,IHC-p,IF,ELISA |
| Reactivity : | Human,Mouse,Rat |
| Category : | 抗原抗体 |
| Size : | 100µg/50µg/20µg |
| Gene_name : | BAD |
| Protein_name : | Bcl2 antagonist of cell death |
| Humangene_id | 572 |
| : | |
| Humanswissprot | Q92934 |
| _no : | |
| Mousegene_id : | 12015 |
| Mouseswissprot | Q61337 |
| _no : | |
| Ratgene_id : | 64639 |
| Ratswissprot_no | O35147 |
| : | |
| Immunogen : | The antiserum was produced against synthesized peptide derived from human BAD around the phosphorylation site of Ser155. AA range:119-168 |
| Specificity : | Phospho-Bad (S155) Polyclonal Antibody detects endogenous levels of Bad protein only when phosphorylated at S155. |
| Formulation : | Liquid in PBS containing 50% glycerol, 0.5% BSA and 0.02% sodium azide. |
| Source : | Rabbit |
| Dilution : | Western Blot: 1/500 - 1/2000. Immunohistochemistry: 1/100 - 1/300. Immunofluorescence: 1/200 - 1/1000. ELISA: 1/10000. Not yet tested in other applications. |
| Purification : | The antibody was affinity-purified from rabbit antiserum by affinity-chromatography using epitope-specific immunogen. |
| Concentration : | 1 mg/ml |
| Storage_stability | -20°C/1 year |
| : | |



Msd : [MSDS_Antibody.pdf](#)

Other_name : [BAD; BBC6; BCL2L8; Bcl2 antagonist of cell death; BAD; Bcl-2-binding component 6; Bcl-2-like protein 8; Bcl-L-8; Bcl-XL/Bcl-2-associated death promoter](#)

Product Images



Western Blot analysis of various cells using Phospho-Bad (S155) Polyclonal Antibody