

## Bcl-x (phospho Thr47) Polyclonal Antibody

|                   |  |
|-------------------|--|
| Catalog_no :      | AP0035   |
| Applications :    | WB,IHC-p,IF,ELISA  |
| Reactivity :      | Human,Mouse,Rat  |
| Category :        | 抗原抗体   |
| Size :            | 100µg/50µg/20µg  |
| Gene_name :       | BCL2L1   |
| Protein_name :    | Bcl-2-like protein 1   |
| Humangene_id      | <a href="#">598</a>  |
| :                 |  |
| Humanswissprot    | <a href="#">Q07817</a>   |
| _no :             |  |
| Mousegene_id :    | <a href="#">12048</a>  |
| Mouseswissprot    | <a href="#">Q64373</a>   |
| _no :             |  |
| Ratgene_id :      | <a href="#">24888</a>  |
| Ratswissprot_no   | <a href="#">P53563</a>   |
| :                 |  |
| Immunogen :       | The antiserum was produced against synthesized peptide derived from human BCL-XL around the phosphorylation site of Thr47. AA range:13-62                    |
| Specificity :     | Phospho-Bcl-x (T47) Polyclonal Antibody detects endogenous levels of Bcl-x protein only when phosphorylated at T47.  |
| Formulation :     | Liquid in PBS containing 50% glycerol, 0.5% BSA and 0.02% sodium azide.  |
| Source :          | Rabbit   |
| Dilution :        | Western Blot: 1/500 - 1/2000. Immunohistochemistry: 1/100 - 1/300. Immunofluorescence: 1/200 - 1/1000. ELISA: 1/40000. Not yet tested in other applications. |
| Purification :    | The antibody was affinity-purified from rabbit antiserum by affinity-chromatography using epitope-specific immunogen.  |
| Concentration :   | 1 mg/ml  |
| Storage_stability | -20°C/1 year   |
| :                 |  |

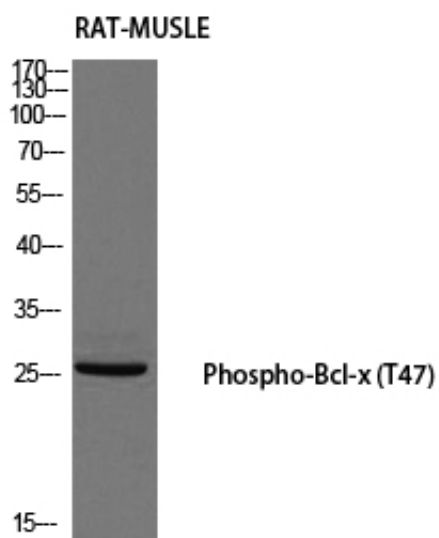


Msd : MSDS\_Antibody.pdf

Other\_name : BCL2L1; BCL2L; BCLX; Bcl-2-like protein 1; Bcl2-L-1; Apoptosis regulator Bcl-X

Molecular Weight : 30KD

## Product Images



Western blot analysis of RAT-MUSLE using Phospho-Bcl-x (T47) antibody. Antibody was diluted at 1:500