



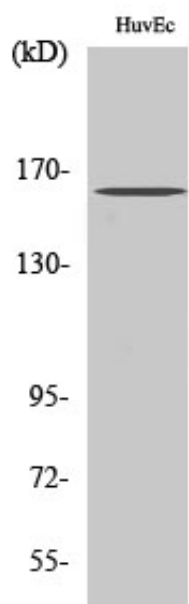
Bcr (phospho Tyr177) Polyclonal Antibody

Catalog_no :	AP0036
Applications :	WB,ELISA
Reactivity :	Human,Mouse
Category :	抗原抗体
Size :	100µg/50µg/20µg
Gene_name :	BCR
Protein_name :	Breakpoint cluster region protein
Humangene_id :	613
Humanswissprot_no :	P11274
Mousegene_id :	110279
Mouseswissprot_no :	Q6PAJ1
Immunogen :	The antiserum was produced against synthesized peptide derived from human Bcr around the phosphorylation site of Tyr177. AA range:144-193
Specificity :	Phospho-Bcr (Y177) Polyclonal Antibody detects endogenous levels of Bcr protein only when phosphorylated at Y177.
Formulation :	Liquid in PBS containing 50% glycerol, 0.5% BSA and 0.02% sodium azide.
Source :	Rabbit
Dilution :	Western Blot: 1/500 - 1/2000. ELISA: 1/10000. Not yet tested in other applications.
Purification :	The antibody was affinity-purified from rabbit antiserum by affinity-chromatography using epitope-specific immunogen.
Concentration :	1 mg/ml
Storage_stability :	-20°C/1 year
Msds :	MSDS_Antibody.pdf
Other_name :	BCR; BCR1; D22S11; Breakpoint cluster region protein; Renal carcinoma antigen NY-REN-26
Molecular	160KD



Weight :

Product Images



Western Blot analysis of various cells using Phospho-Bcr (Y177) Polyclonal Antibody