

C/EBP β (phospho Thr235) Polyclonal Antibody

Catalog_no :	AP0040
Applications :	WB,IHC-p,IF,ELISA
Reactivity :	Human,Mouse,Rat
Category :	抗原抗体
Size :	100 μ g/50 μ g/20 μ g
Gene_name :	CEBPB
Protein_name :	CCAAT/enhancer-binding protein beta
Humangene_id	1051
:	
Humanswissprot	P17676
_no :	
Mousegene_id :	12608
Mouseswissprot	P28033
_no :	
Ratgene_id :	24253
Ratswissprot_no	P21272
:	
Immunogen :	The antiserum was produced against synthesized peptide derived from human C/EBP-beta around the phosphorylation site of Thr235/188. AA range:201-250
Specificity :	Phospho-C/EBP β (T235) Polyclonal Antibody detects endogenous levels of C/EBP β protein only when phosphorylated at T235.
Formulation :	Liquid in PBS containing 50% glycerol, 0.5% BSA and 0.02% sodium azide.
Source :	Rabbit
Dilution :	Western Blot: 1/500 - 1/2000. Immunohistochemistry: 1/100 - 1/300. Immunofluorescence: 1/200 - 1/1000. ELISA: 1/10000. Not yet tested in other applications.
Purification :	The antibody was affinity-purified from rabbit antiserum by affinity-chromatography using epitope-specific immunogen.
Concentration :	1 mg/ml
Storage_stability	-20°C/1 year
:	



MsdS : MSDS_Antibody.pdf

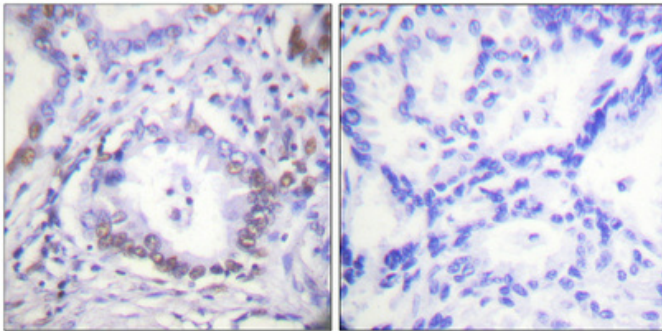
Other_name : CEBPB; LAP; TCF5; PP9092; CCAAT/enhancer-binding protein beta; C/EBP beta; Liver activator protein; Nuclear factor NF-IL6; Transcription factor 5; TCF-5

Molecular Weight : 36KD

Product Images



Western Blot analysis of various cells using Phospho-C/EBP β (T235) Polyclonal Antibody diluted at 1 : 500



Immunohistochemical analysis of paraffin-embedded Human lung cancer. Antibody was diluted at 1:100(4°, overnight). High-pressure and temperature Tris-EDTA, pH8.0 was used for antigen retrieval. Negative control (right) obtained from antibody was pre-absorbed by immunogen peptide.