

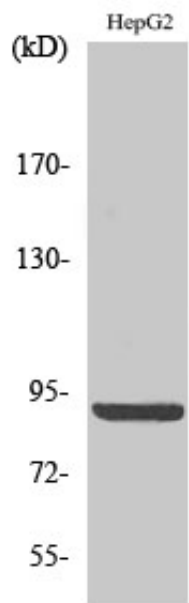
Calnexin (phospho Ser583) Polyclonal Antibody

Catalog_no :	AP0041
Applications :	WB,IHC-p,IF,ELISA
Reactivity :	Human,Mouse,Rat
Category :	抗原抗体
Size :	100µg/50µg/20µg
Gene_name :	CANX
Protein_name :	Calnexin
Humangene_id :	821
Humanswissprot_no :	P27824
Mousegene_id :	12330
Mouseswissprot_no :	P35564
Ratgene_id :	29144
Ratswissprot_no :	P35565
Immunogen :	The antiserum was produced against synthesized peptide derived from human Calnexin around the phosphorylation site of Ser583. AA range:543-592
Specificity :	Phospho-Calnexin (S583) Polyclonal Antibody detects endogenous levels of Calnexin protein only when phosphorylated at S583.
Formulation :	Liquid in PBS containing 50% glycerol, 0.5% BSA and 0.02% sodium azide.
Source :	Rabbit
Dilution :	Western Blot: 1/500 - 1/2000. Immunohistochemistry: 1/100 - 1/300. Immunofluorescence: 1/200 - 1/1000. ELISA: 1/5000. Not yet tested in other applications.
Purification :	The antibody was affinity-purified from rabbit antiserum by affinity-chromatography using epitope-specific immunogen.
Concentration :	1 mg/ml
Storage_stability :	-20°C/1 year



MsdS :	MSDS_Antibody.pdf
Other_name :	CANX; Calnexin; IP90; Major histocompatibility complex class I antigen-binding protein p88; p90
Molecular Weight :	90KD

Product Images



Western Blot analysis of various cells using Phospho-Calnexin (S583) Polyclonal Antibody diluted at 1 : 2000