

CaMKII α/δ (phospho Thr286) Polyclonal Antibody

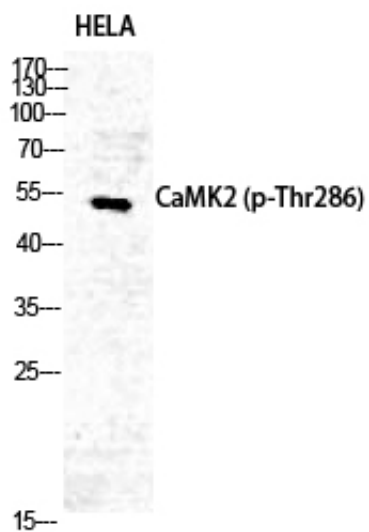
Catalog_no :	AP0042
Applications :	WB,IHC-p,IF,ELISA
Reactivity :	Human,Mouse,Rat
Category :	抗原抗体
Size :	100 μ g/50 μ g/20 μ g
Gene_name :	CAMK2A/CAMK2D
Protein_name :	Calcium/calmodulin-dependent protein kinase type II subunit alpha/delta
Humangene_id :	815/817
Humanswissprot_no :	Q9UQM7/Q13557
Mousegene_id :	12322/108058
Ratgene_id :	25400/24246
Ratswissprot_no :	P11275/P15791
Immunogen :	The antiserum was produced against synthesized peptide derived from human CaMK2 around the phosphorylation site of Thr286. AA range:256-305
Specificity :	Phospho-CaMKII α/δ (T286) Polyclonal Antibody detects endogenous levels of CaMKII α/δ protein only when phosphorylated at T286.
Formulation :	Liquid in PBS containing 50% glycerol, 0.5% BSA and 0.02% sodium azide.
Source :	Rabbit
Dilution :	Western Blot: 1/500 - 1/2000. Immunohistochemistry: 1/100 - 1/300. Immunofluorescence: 1/200 - 1/1000. ELISA: 1/10000. Not yet tested in other applications.
Purification :	The antibody was affinity-purified from rabbit antiserum by affinity-chromatography using epitope-specific immunogen.
Concentration :	1 mg/ml
Storage_stability :	-20°C/1 year
Msds :	MSDS_Antibody.pdf



Other_name : CAMK2A; CAMKA; KIAA0968; Calcium/calmodulin-dependent protein kinase type II subunit alpha; CaM kinase II subunit alpha; CaMK-II subunit alpha; CAMK2D; CAMKD; Calcium/calmodulin-dependent protein kinase type II subunit delta; CaM kinase II

Molecular Weight : 54KD

Product Images



Western Blot analysis of HELA cells using Phospho-CaMKII α/δ (T286) Polyclonal Antibody diluted at 1 : 500