

Catenin- $\beta$  (phospho Thr41/S45) Polyclonal Antibody

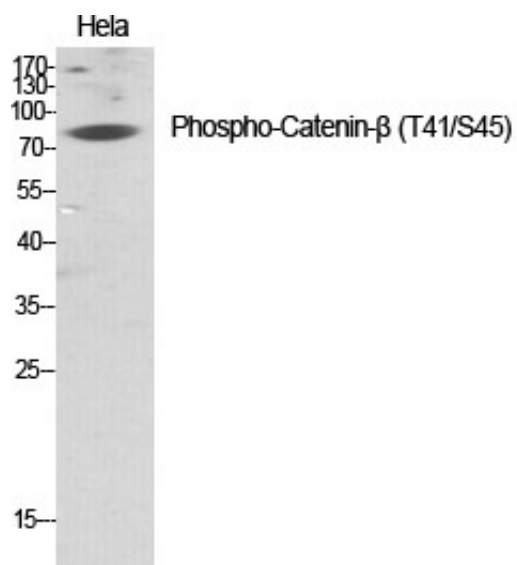
Catalog_no :	AP0048
Applications :	WB,ELISA
Reactivity :	Human,Mouse,Rat
Category :	抗原抗体
Size :	100 $\mu$ g/50 $\mu$ g/20 $\mu$ g
Gene_name :	CTNNB1
Protein_name :	Catenin beta-1
Humangene_id :	<a href="#">1499</a>
Humanswissprot_no :	<a href="#">P35222</a>
Mousegene_id :	<a href="#">12387</a>
Mouseswissprot_no :	<a href="#">Q02248</a>
Ratgene_id :	<a href="#">84353</a>
Ratswissprot_no :	<a href="#">Q9WU82</a>
Immunogen :	The antiserum was produced against synthesized peptide derived from human Catenin-beta around the phosphorylation site of Thr41/Ser45. AA range:11-60
Specificity :	Phospho-Catenin- $\beta$ (T41/S45) Polyclonal Antibody detects endogenous levels of Catenin- $\beta$ protein only when phosphorylated at T41/S45.
Formulation :	Liquid in PBS containing 50% glycerol, 0.5% BSA and 0.02% sodium azide.
Source :	Rabbit
Dilution :	Western Blot: 1/500 - 1/2000. ELISA: 1/20000. Not yet tested in other applications.
Purification :	The antibody was affinity-purified from rabbit antiserum by affinity-chromatography using epitope-specific immunogen.
Concentration :	1 mg/ml
Storage_stability :	-20°C/1 year
Msds :	MSDS_Antibody.pdf



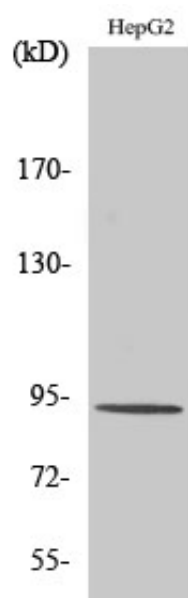
Other\_name : CTNNB1; CTNNB; OK/SW-cl.35; Catenin beta-1; Beta-catenin

Molecular Weight : 85KD

## Product Images



Western Blot analysis of various cells using Phospho-Catenin-β (T41/S45) Polyclonal Antibody diluted at 1 : 1000



Western Blot analysis of HepG2 cells using Phospho-Catenin-β (T41/S45) Polyclonal Antibody diluted at 1 : 1000