

Catenin- β (phospho Tyr654) Polyclonal Antibody

Catalog_no :	AP0049
Applications :	WB,IHC-p,ELISA
Reactivity :	Human,Mouse,Rat
Category :	抗原抗体
Size :	100 μ g/50 μ g/20 μ g
Gene_name :	CTNNB1
Protein_name :	Catenin beta-1
Humangene_id :	1499
Humanswissprot_no :	P35222
Mousegene_id :	12387
Mouseswissprot_no :	Q02248
Ratgene_id :	84353
Ratswissprot_no :	Q9WU82
Immunogen :	The antiserum was produced against synthesized peptide derived from human Catenin-beta around the phosphorylation site of Tyr654. AA range:620-669
Specificity :	Phospho-Catenin- β (Y654) Polyclonal Antibody detects endogenous levels of Catenin- β protein only when phosphorylated at Y654.
Formulation :	Liquid in PBS containing 50% glycerol, 0.5% BSA and 0.02% sodium azide.
Source :	Rabbit
Dilution :	Western Blot: 1/500 - 1/2000. Immunohistochemistry: 1/100 - 1/300. ELISA: 1/40000. Not yet tested in other applications.
Purification :	The antibody was affinity-purified from rabbit antiserum by affinity-chromatography using epitope-specific immunogen.
Concentration :	1 mg/ml
Storage_stability :	-20°C/1 year

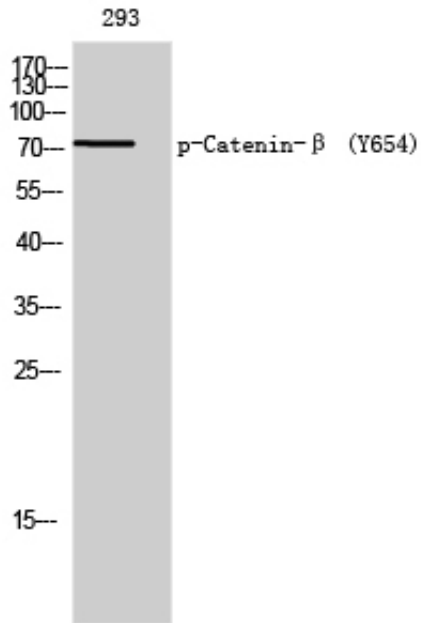


Msd : MSDS_Antibody.pdf

Other_name : CTNNB1; CTNNB; OK/SW-cl.35; Catenin beta-1; Beta-catenin

Molecular Weight : 75KD

Product Images



Western Blot analysis of 293 cells using Phospho-Catenin-β (Y654) Polyclonal Antibody