

## Caveolin-1 (phospho Tyr14) Polyclonal Antibody

Catalog_no :	AP0050
Applications :	WB,ELISA
Reactivity :	Human,Mouse,Rat
Category :	抗原抗体
Size :	100µg/50µg/20µg
Gene_name :	CAV1
Protein_name :	Caveolin-1
Humangene_id :	<a href="#">857</a>
Humanswissprot_no :	<a href="#">Q03135</a>
Mousegene_id :	<a href="#">12389</a>
Mouseswissprot_no :	<a href="#">P49817</a>
Ratswissprot_no :	<a href="#">P41350</a>
Immunogen :	The antiserum was produced against synthesized peptide derived from human Caveolin-1 around the phosphorylation site of Tyr14. AA range:5-54
Specificity :	Phospho-Caveolin-1 (Y14) Polyclonal Antibody detects endogenous levels of Caveolin-1 protein only when phosphorylated at Y14.
Formulation :	Liquid in PBS containing 50% glycerol, 0.5% BSA and 0.02% sodium azide.
Source :	Rabbit
Dilution :	Western Blot: 1/500 - 1/2000. ELISA: 1/20000. Not yet tested in other applications.
Purification :	The antibody was affinity-purified from rabbit antiserum by affinity-chromatography using epitope-specific immunogen.
Concentration :	1 mg/ml
Storage_stability :	-20°C/1 year
Msds :	<a href="#">MSDS_Antibody.pdf</a>
Other_name :	CAV1; CAV; Caveolin-1

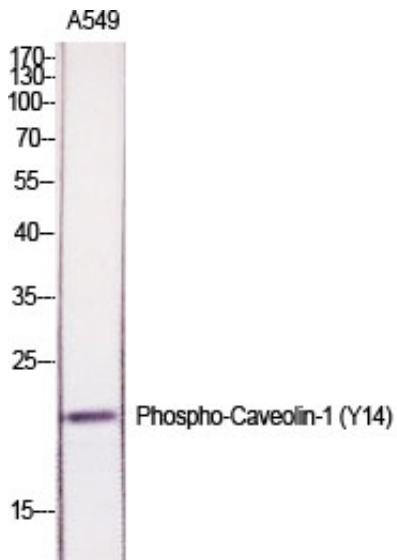


Molecular  
Weight :

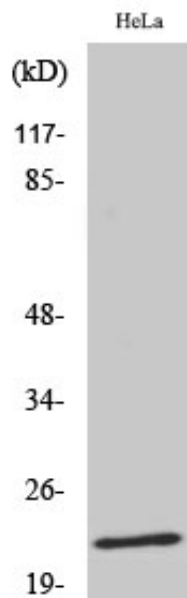
20KD

---

## Product Images



Western Blot analysis of various cells using Phospho-Caveolin-1 (Y14) Polyclonal Antibody diluted at 1 : 1000



Western Blot analysis of HeLa cells using Phospho-Caveolin-1 (Y14) Polyclonal Antibody diluted at 1 : 1000