

## Cdc2 (phospho Thr161) Polyclonal Antibody

Catalog_no :	AP0053
Applications :	WB,IHC-p,ELISA
Reactivity :	Human,Mouse,Rat
Category :	抗原抗体
Size :	100µg/50µg/20µg
Gene_name :	CDK1
Protein_name :	Cyclin-dependent kinase 1
Humangene_id	<a href="#">983</a>
:	
Humanswissprot	<a href="#">P06493</a>
_no :	
Mousegene_id :	<a href="#">12534</a>
Mouseswissprot	<a href="#">P11440</a>
_no :	
Ratgene_id :	<a href="#">54237</a>
Ratswissprot_no	<a href="#">P39951</a>
:	
Immunogen :	The antiserum was produced against synthesized peptide derived from human CDC2 around the phosphorylation site of Thr161. AA range:131-180
Specificity :	Phospho-Cdc2 (T161) Polyclonal Antibody detects endogenous levels of Cdc2 protein only when phosphorylated at T161.
Formulation :	Liquid in PBS containing 50% glycerol, 0.5% BSA and 0.02% sodium azide.
Source :	Rabbit
Dilution :	Western Blot: 1/500 - 1/2000. Immunohistochemistry: 1/100 - 1/300. ELISA: 1/5000. Not yet tested in other applications.
Purification :	The antibody was affinity-purified from rabbit antiserum by affinity-chromatography using epitope-specific immunogen.
Concentration :	1 mg/ml
Storage_stability	-20°C/1 year
:	

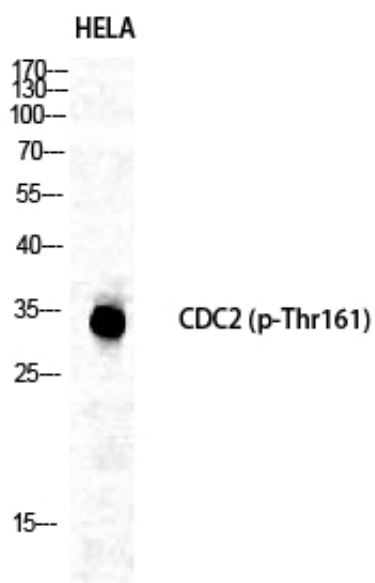


MsdS : [MSDS\\_Antibody.pdf](#)

Other\_name : [CDK1; CDC2; CDC28A; CDKN1; P34CDC2; Cyclin-dependent kinase 1; CDK1; Cell division control protein 2 homolog; Cell division protein kinase 1; p34 protein kinase](#)

Molecular Weight : [34KD](#)

## Product Images



Western Blot analysis of various cells using Phospho-Cdc2 (T161) Polyclonal Antibody diluted at 1 : 1000



Western Blot analysis of HeLa cells using Phospho-Cdc2 (T161) Polyclonal Antibody diluted at 1 : 1000