

Cdc2 (phospho Tyr15) Polyclonal Antibody

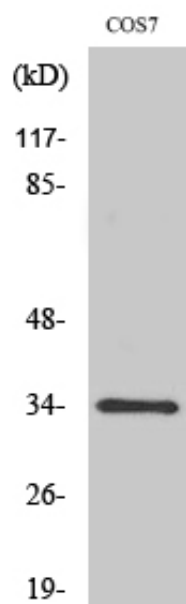
Catalog_no :	AP0054
Applications :	WB,ELISA
Reactivity :	Human,Mouse,Rat,Monkey
Category :	抗原抗体
Size :	100µg/50µg/20µg
Gene_name :	CDK1
Protein_name :	Cyclin-dependent kinase 1
Humangene_id	983
:	
Humanswissprot	P06493
_no :	
Mousegene_id :	12534
Mouseswissprot	P11440
_no :	
Ratgene_id :	54237
Ratswissprot_no	P39951
:	
Immunogen :	The antiserum was produced against synthesized peptide derived from human CDC2 around the phosphorylation site of Tyr15. AA range:5-54
Specificity :	Phospho-Cdc2 (Y15) Polyclonal Antibody detects endogenous levels of Cdc2 protein only when phosphorylated at Y15.
Formulation :	Liquid in PBS containing 50% glycerol, 0.5% BSA and 0.02% sodium azide.
Source :	Rabbit
Dilution :	Western Blot: 1/500 - 1/2000. ELISA: 1/10000. Not yet tested in other applications.
Purification :	The antibody was affinity-purified from rabbit antiserum by affinity-chromatography using epitope-specific immunogen.
Concentration :	1 mg/ml
Storage_stability	-20°C/1 year
:	
Msds :	MSDS_Antibody.pdf



Other_name : CDK1; CDC2; CDC28A; CDKN1; P34CDC2; Cyclin-dependent kinase 1; CDK1; Cell division control protein 2 homolog; Cell division protein kinase 1; p34 protein kinase

Molecular Weight : 34KD

Product Images



Western Blot analysis of various cells using Phospho-Cdc2 (Y15) Polyclonal Antibody