

Cdc25A (phospho Ser75) Polyclonal Antibody

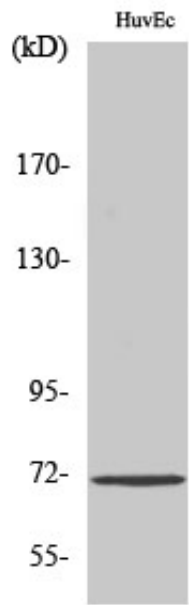
Catalog_no :	AP0055
Applications :	WB,IHC-p,ELISA
Reactivity :	Human,Mouse,Rat
Category :	抗原抗体
Size :	100µg/50µg/20µg
Gene_name :	CDC25A
Protein_name :	M-phase inducer phosphatase 1
Humangene_id	993
:	
Humanswissprot	P30304
_no :	
Mouseswissprot	P48964
_no :	
Ratgene_id :	171102
Ratswissprot_no	P48965
:	
Immunogen :	Synthesized phospho-peptide around the phosphorylation site of human Cdc25A (phospho Ser75)
Specificity :	Phospho-Cdc25A (S75) Polyclonal Antibody detects endogenous levels of Cdc25A protein only when phosphorylated at S75.
Formulation :	Liquid in PBS containing 50% glycerol, 0.5% BSA and 0.02% sodium azide.
Source :	Rabbit
Dilution :	Western Blot: 1/500 - 1/2000. Immunohistochemistry: 1/100 - 1/300. ELISA: 1/5000. Not yet tested in other applications.
Purification :	The antibody was affinity-purified from rabbit antiserum by affinity-chromatography using epitope-specific immunogen.
Concentration :	1 mg/ml
Storage_stability	-20°C/1 year
:	
Msds :	MSDS_Antibody.pdf



Other_name : CDC25A; M-phase inducer phosphatase 1; Dual specificity phosphatase Cdc25A

Molecular Weight : 59KD

Product Images



Western Blot analysis of various cells using Phospho-Cdc25A (S75) Polyclonal Antibody