

## Cdc25B (phospho Ser323) Polyclonal Antibody

Catalog_no :	AP0057
Applications :	WB,IHC-p,ELISA
Reactivity :	Human,Mouse,Rat
Category :	抗原抗体
Size :	100µg/50µg/20µg
Gene_name :	CDC25B
Protein_name :	M-phase inducer phosphatase 2
Humangene_id	<a href="#">994</a>
:	
Humanswissprot	<a href="#">P30305</a>
_no :	
Mousegene_id :	<a href="#">12531</a>
Mouseswissprot	<a href="#">P30306</a>
_no :	
Ratgene_id :	<a href="#">171103</a>
Ratswissprot_no	<a href="#">P48966</a>
:	
Immunogen :	The antiserum was produced against synthesized peptide derived from human CDC25B around the phosphorylation site of Ser323. AA range:289-338
Specificity :	Phospho-Cdc25B (S323) Polyclonal Antibody detects endogenous levels of Cdc25B protein only when phosphorylated at S323.
Formulation :	Liquid in PBS containing 50% glycerol, 0.5% BSA and 0.02% sodium azide.
Source :	Rabbit
Dilution :	Western Blot: 1/500 - 1/2000. ELISA: 1/20000. Not yet tested in other applications.
Purification :	The antibody was affinity-purified from rabbit antiserum by affinity-chromatography using epitope-specific immunogen.
Concentration :	1 mg/ml
Storage_stability	-20°C/1 year
:	
Msds :	MSDS_Antibody.pdf



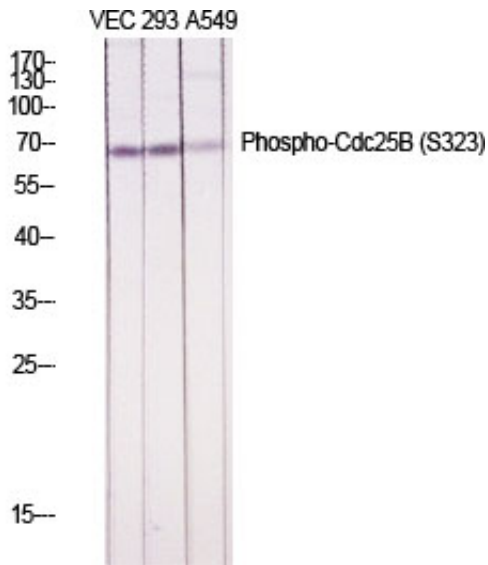
Other\_name : CDC25B; CDC25HU2; M-phase inducer phosphatase 2; Dual specificity phosphatase  
Cdc25B

---

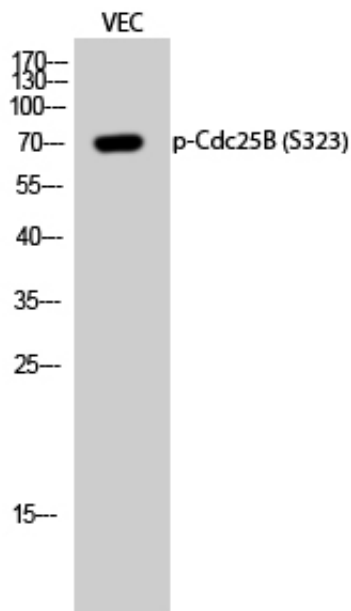
Molecular Weight : 70KD

---

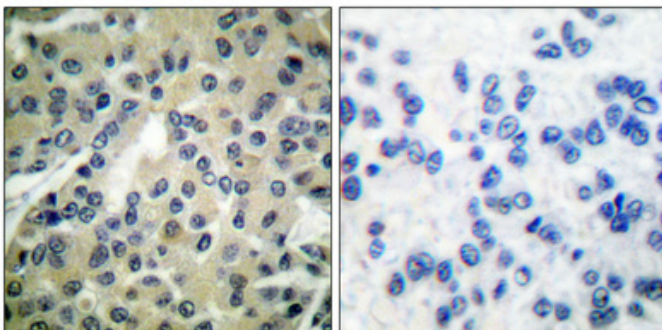
## Product Images



Western Blot analysis of various cells using Phospho-Cdc25B (S323) Polyclonal Antibody diluted at 1 : 1000



Western Blot analysis of VEC cells using Phospho-Cdc25B (S323) Polyclonal Antibody diluted at 1 : 1000



Immunohistochemical analysis of paraffin-embedded Human breast cancer. Antibody was diluted at 1:100(4°,overnight). High-pressure and temperature Tris-EDTA,pH8.0 was used for antigen retrieval. Negative contrl (right) obtained from antibody was pre-absorbed by immunogen peptide.