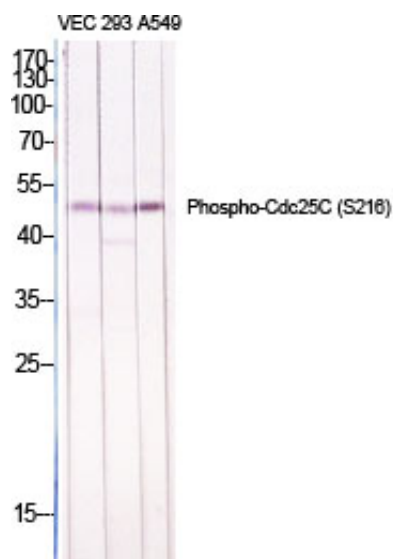


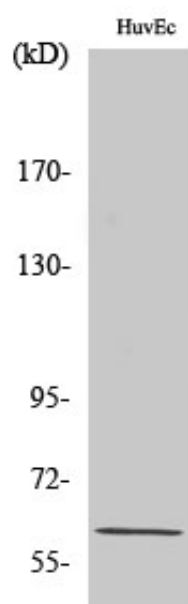
## Cdc25C (phospho Ser216) Polyclonal Antibody

Catalog_no :	AP0058
Applications :	WB,IHC-p,ELISA
Reactivity :	Human
Category :	抗原抗体
Size :	100µg/50µg/20µg
Gene_name :	CDC25C
Protein_name :	M-phase inducer phosphatase 3
Humangene_id :	<a href="#">995</a>
Humanswissprot_no :	<a href="#">P30307</a>
Immunogen :	The antiserum was produced against synthesized peptide derived from human CDC25C around the phosphorylation site of Ser216. AA range:183-232
Specificity :	Phospho-Cdc25C (S216) Polyclonal Antibody detects endogenous levels of Cdc25C protein only when phosphorylated at S216.
Formulation :	Liquid in PBS containing 50% glycerol, 0.5% BSA and 0.02% sodium azide.
Source :	Rabbit
Dilution :	Western Blot: 1/500 - 1/2000. Immunohistochemistry: 1/100 - 1/300. ELISA: 1/10000. Not yet tested in other applications.
Purification :	The antibody was affinity-purified from rabbit antiserum by affinity-chromatography using epitope-specific immunogen.
Concentration :	1 mg/ml
Storage_stability :	-20°C/1 year
Msds :	<a href="#">MSDS_Antibody.pdf</a>
Other_name :	CDC25C; M-phase inducer phosphatase 3; Dual specificity phosphatase Cdc25C
Molecular Weight :	53KD

## Product Images



Western Blot analysis of various cells using Phospho-Cdc25C (S216) Polyclonal Antibody diluted at 1 : 1000



Western Blot analysis of HuvEc cells using Phospho-Cdc25C (S216) Polyclonal Antibody diluted at 1 : 1000