

Cdk1/2/3 (phospho Thr14) Polyclonal Antibody

Catalog_no :	<u>AP0059</u>
Applications :	<u>WB,IF,ELISA</u>
Reactivity :	<u>Human,Mouse,Rat,Monkey</u>
Category :	<u>抗原抗体</u>
Size :	<u>100µg/50µg/20µg</u>
Gene_name :	<u>CDK1/CDK2/CDK3</u>
Protein_name :	<u>Cyclin-dependent kinase 1/2/3</u>
Humangene_id :	<u>1017</u>
Humanswissprot_no :	<u>P06493/P24941/Q00526</u>
Mousegene_id :	<u>12534/12566</u>
Ratgene_id :	<u>54237</u>
Ratswissprot_no :	<u>P39951/Q63699</u>
Immunogen :	<u>The antiserum was produced against synthesized peptide derived from human CDK1/CDC2 around the phosphorylation site of Thr14. AA range:1-50</u>
Specificity :	<u>Phospho-Cdk1/2/3 (T14) Polyclonal Antibody detects endogenous levels of Cdk1/2/3 protein only when phosphorylated at T14.</u>
Formulation :	<u>Liquid in PBS containing 50% glycerol, 0.5% BSA and 0.02% sodium azide.</u>
Source :	<u>Rabbit</u>
Dilution :	<u>Western Blot: 1/500 - 1/2000. Immunofluorescence: 1/200 - 1/1000. ELISA: 1/5000. Not yet tested in other applications.</u>
Purification :	<u>The antibody was affinity-purified from rabbit antiserum by affinity-chromatography using epitope-specific immunogen.</u>
Concentration :	<u>1 mg/ml</u>
Storage_stability :	<u>-20°C/1 year</u>
Msds :	<u>MSDS_Antibody.pdf</u>
Other_name :	<u>CDK1; CDC2; CDC28A; CDKN1; P34CDC2; Cyclin-dependent kinase 1; CDK1; Cell division</u>

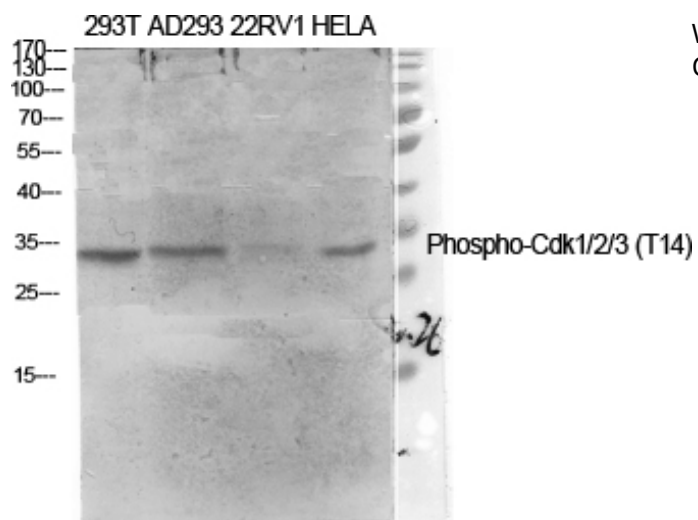


control protein 2 homolog; Cell division protein kinase 1; p34 protein kinase; CDK2; CDKN2; Cyclin-dependent kinase 2; Cell division protein kinase 2; p33 pr

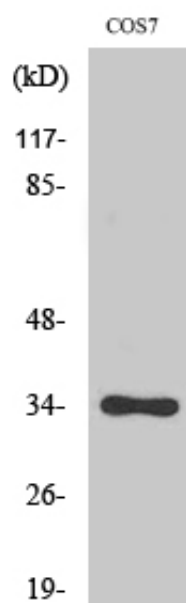
Molecular
Weight :

34KD

Product Images



Western Blot analysis of various cells using Phospho-Cdk1/2/3 (T14) Polyclonal Antibody diluted at 1 : 2000



Western Blot analysis of COS7 cells using Phospho-Cdk1/2/3 (T14) Polyclonal Antibody diluted at 1 : 2000