

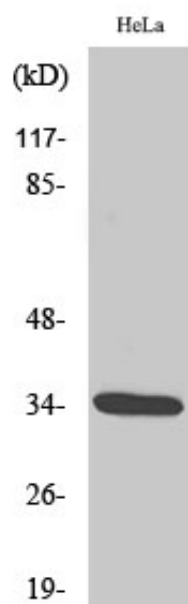
Cdk2 (phospho Thr160) Polyclonal Antibody

Catalog_no :	AP0060
Applications :	WB,IHC-p,ELISA
Reactivity :	Human,Mouse,Rat
Category :	抗原抗体
Size :	100µg/50µg/20µg
Gene_name :	CDK2
Protein_name :	Cyclin-dependent kinase 2
Humangene_id	1017
:	
Humanswissprot	P24941
_no :	
Mousegene_id :	12566
Mouseswissprot	P97377
_no :	
Ratswissprot_no	Q63699
:	
Immunogen :	Synthesized phospho-peptide around the phosphorylation site of human Cdk2 (phospho Thr160)
Specificity :	Phospho-Cdk2 (T160) Polyclonal Antibody detects endogenous levels of Cdk2 protein only when phosphorylated at T160.
Formulation :	Liquid in PBS containing 50% glycerol, 0.5% BSA and 0.02% sodium azide.
Source :	Rabbit
Dilution :	Western Blot: 1/500 - 1/2000. Immunohistochemistry: 1/100 - 1/300. ELISA: 1/5000. Not yet tested in other applications.
Purification :	The antibody was affinity-purified from rabbit antiserum by affinity-chromatography using epitope-specific immunogen.
Concentration :	1 mg/ml
Storage_stability	-20°C/1 year
:	
Msds :	MSDS_Antibody.pdf



Other_name : CDK2; CDKN2; Cyclin-dependent kinase 2; Cell division protein kinase 2; p33 protein kinase

Product Images



Western Blot analysis of various cells using Phospho-Cdk2 (T160) Polyclonal Antibody diluted at 1 : 1000