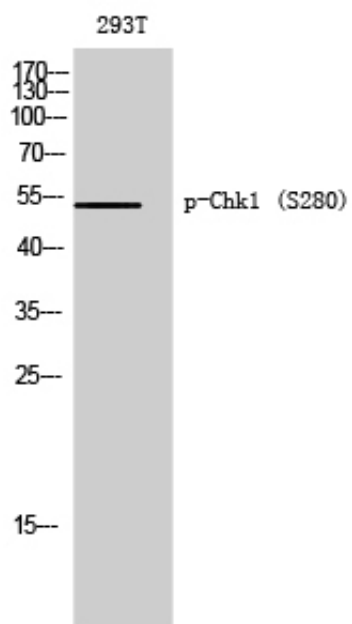


Chk1 (phospho Ser280) Polyclonal Antibody

Catalog_no :	AP0061
Applications :	WB,ELISA
Reactivity :	Human
Category :	抗原抗体
Size :	100µg/50µg/20µg
Gene_name :	CHEK1
Protein_name :	Serine/threonine-protein kinase Chk1
Humangene_id :	1111
Humanswissprot_no :	O14757
Immunogen :	The antiserum was produced against synthesized peptide derived from human Chk1 around the phosphorylation site of Ser280. AA range:251-300
Specificity :	Phospho-Chk1 (S280) Polyclonal Antibody detects endogenous levels of Chk1 protein only when phosphorylated at S280.
Formulation :	Liquid in PBS containing 50% glycerol, 0.5% BSA and 0.02% sodium azide.
Source :	Rabbit
Dilution :	Western Blot: 1/500 - 1/2000. ELISA: 1/20000. Not yet tested in other applications.
Purification :	The antibody was affinity-purified from rabbit antiserum by affinity-chromatography using epitope-specific immunogen.
Concentration :	1 mg/ml
Storage_stability :	-20°C/1 year
Msds :	MSDS_Antibody.pdf
Other_name :	CHEK1; CHK1; Serine/threonine-protein kinase Chk1; CHK1 checkpoint homolog; Cell cycle checkpoint kinase; Checkpoint kinase-1
Molecular Weight :	54KD

Product Images



Western Blot analysis of 293T cells using Phospho-Chk1 (S280) Polyclonal Antibody diluted at 1 : 500