

Chk1 (phospho Ser317) Polyclonal Antibody

Catalog_no :	AP0062
Applications :	WB,IHC-p,ELISA
Reactivity :	Human,Mouse,Rat
Category :	抗原抗体
Size :	100µg/50µg/20µg
Gene_name :	CHEK1
Protein_name :	Serine/threonine-protein kinase Chk1
Humangene_id	1111
:	
Humanswissprot	O14757
_no :	
Mousegene_id :	12649
Mouseswissprot	O35280
_no :	
Ratgene_id :	140583
Ratswissprot_no	Q91ZN7
:	
Immunogen :	The antiserum was produced against synthesized peptide derived from human Chk1 around the phosphorylation site of Ser317. AA range:286-335
Specificity :	Phospho-Chk1 (S317) Polyclonal Antibody detects endogenous levels of Chk1 protein only when phosphorylated at S317.
Formulation :	Liquid in PBS containing 50% glycerol, 0.5% BSA and 0.02% sodium azide.
Source :	Rabbit
Dilution :	Western Blot: 1/500 - 1/2000. Immunohistochemistry: 1/100 - 1/300. ELISA: 1/5000. Not yet tested in other applications.
Purification :	The antibody was affinity-purified from rabbit antiserum by affinity-chromatography using epitope-specific immunogen.
Concentration :	1 mg/ml
Storage_stability	-20°C/1 year
:	

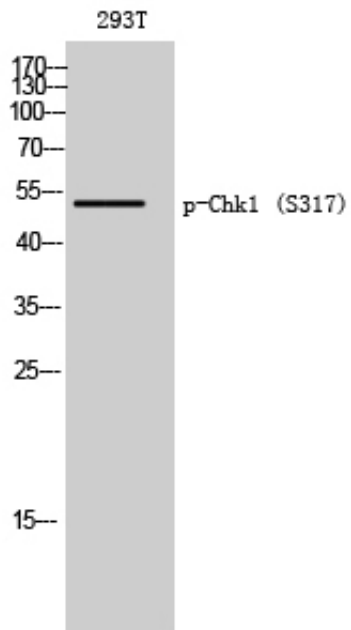


MsdS : MSDS_Antibody.pdf

Other_name : CHEK1; CHK1; Serine/threonine-protein kinase Chk1; CHK1 checkpoint homolog; Cell cycle checkpoint kinase; Checkpoint kinase-1

Molecular Weight : 54KD

Product Images



Western Blot analysis of 293T cells using Phospho-Chk1 (S317) Polyclonal Antibody diluted at 1 : 500