

c-Kit (phospho Tyr721) Polyclonal Antibody

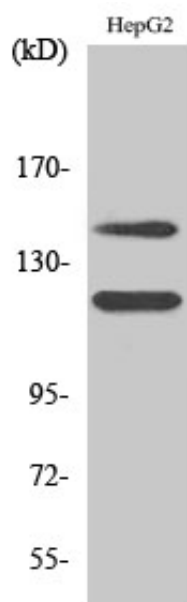
Catalog_no :	AP0066
Applications :	WB,ELISA
Reactivity :	Human,Mouse,Rat
Category :	抗原抗体
Size :	100µg/50µg/20µg
Gene_name :	KIT
Protein_name :	Mast/stem cell growth factor receptor Kit
Humangene_id :	3815
Humanswissprot_no :	P10721
Mousegene_id :	16590
Mouseswissprot_no :	P05532
Immunogen :	The antiserum was produced against synthesized peptide derived from human c-Kit around the phosphorylation site of Tyr721. AA range:688-737
Specificity :	Phospho-c-Kit (Y721) Polyclonal Antibody detects endogenous levels of c-Kit protein only when phosphorylated at Y721.
Formulation :	Liquid in PBS containing 50% glycerol, 0.5% BSA and 0.02% sodium azide.
Source :	Rabbit
Dilution :	Western Blot: 1/500 - 1/2000. ELISA: 1/10000. Not yet tested in other applications.
Purification :	The antibody was affinity-purified from rabbit antiserum by affinity-chromatography using epitope-specific immunogen.
Concentration :	1 mg/ml
Storage_stability :	-20°C/1 year
Msds :	MSDS_Antibody.pdf
Other_name :	KIT; SCFR; Mast/stem cell growth factor receptor Kit; SCFR; Piebald trait protein; PBT; Proto-oncogene c-Kit; Tyrosine-protein kinase Kit; p145 c-kit; v-kit Hardy-Zuckerman 4 feline sarcoma viral oncogene homolog; CD antigen CD117



Molecular
Weight :

110KD

Product Images



Western Blot analysis of various cells using Phospho-c-Kit (Y721) Polyclonal Antibody