

## Connexin 43 (phospho Ser368) Polyclonal Antibody

Catalog_no :	AP0071
Applications :	WB,IHC-p,ELISA
Reactivity :	Human,Mouse,Rat
Category :	抗原抗体
Size :	100µg/50µg/20µg
Gene_name :	GJA1
Protein_name :	Gap junction alpha-1 protein
Humangene_id :	<a href="#">2697</a>
Humanswissprot_no :	<a href="#">P17302</a>
Mousegene_id :	<a href="#">14609</a>
Mouseswissprot_no :	<a href="#">P23242</a>
Ratgene_id :	<a href="#">24392</a>
Ratswissprot_no :	<a href="#">P08050</a>
Immunogen :	The antiserum was produced against synthesized peptide derived from human Connexin 43 around the phosphorylation site of Ser367. AA range:332-381
Specificity :	Phospho-Connexin 43 (S368) Polyclonal Antibody detects endogenous levels of Connexin 43 protein only when phosphorylated at S368.
Formulation :	Liquid in PBS containing 50% glycerol, 0.5% BSA and 0.02% sodium azide.
Source :	Rabbit
Dilution :	Western Blot: 1/500 - 1/2000. Immunohistochemistry: 1/100 - 1/300. ELISA: 1/20000. Not yet tested in other applications.
Purification :	The antibody was affinity-purified from rabbit antiserum by affinity-chromatography using epitope-specific immunogen.
Concentration :	1 mg/ml
Storage_stability :	-20°C/1 year

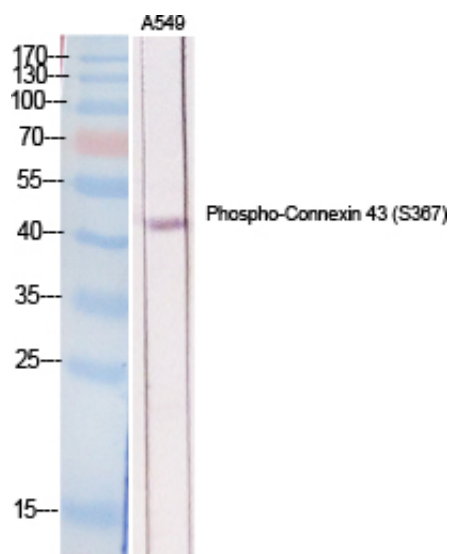


Msd : MSDS\_Antibody.pdf

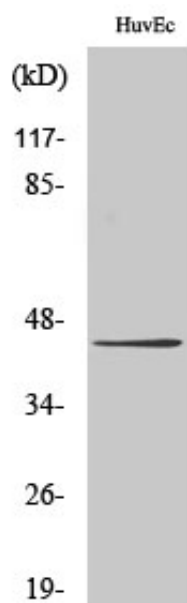
Other\_name : GJA1; GJAL; Gap junction alpha-1 protein; Connexin-43; Cx43; Gap junction 43 kDa heart protein

Molecular Weight : 43KD

## Product Images



Western Blot analysis of various cells using Phospho-Connexin 43 (S368) Polyclonal Antibody diluted at 1 : 2000



Western Blot analysis of HuvEc cells using Phospho-Connexin 43 (S368) Polyclonal Antibody diluted at 1 : 2000