

c-Src (phospho Tyr529) Polyclonal Antibody

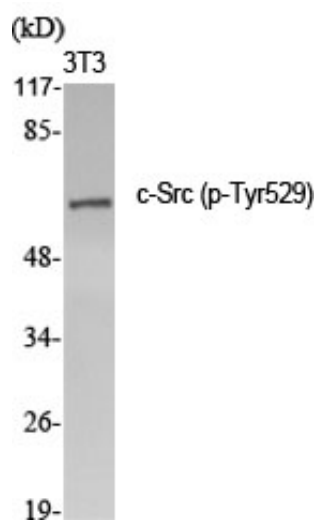
Catalog_no :	AP0078
Applications :	WB,IHC-p,ELISA
Reactivity :	Human,Mouse,Rat,Monkey
Category :	抗原抗体
Size :	100µg/50µg/20µg
Gene_name :	SRC
Protein_name :	Proto-oncogene tyrosine-protein kinase Src
Humangene_id	6714
:	
Humanswissprot	P12931
_no :	
Mousegene_id :	20779
Mouseswissprot	P05480
_no :	
Ratswissprot_no	Q9WUD9
:	
Immunogen :	The antiserum was produced against synthesized peptide derived from human Src around the phosphorylation site of Tyr529. AA range:487-536
Specificity :	Phospho-c-Src (Y529) Polyclonal Antibody detects endogenous levels of c-Src protein only when phosphorylated at Y529.
Formulation :	Liquid in PBS containing 50% glycerol, 0.5% BSA and 0.02% sodium azide.
Source :	Rabbit
Dilution :	Western Blot: 1/500 - 1/2000. Immunohistochemistry: 1/100 - 1/300. ELISA: 1/10000. Not yet tested in other applications.
Purification :	The antibody was affinity-purified from rabbit antiserum by affinity-chromatography using epitope-specific immunogen.
Concentration :	1 mg/ml
Storage_stability	-20°C/1 year
:	
Msds :	MSDS_Antibody.pdf



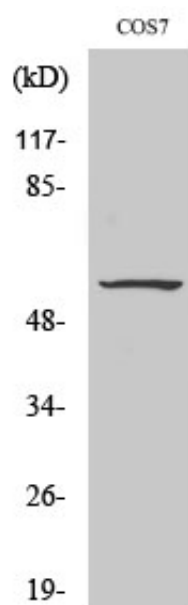
Other_name : SRC; SRC1; Proto-oncogene tyrosine-protein kinase Src; Proto-oncogene c-Src; pp60c-src; p60-Src

Molecular Weight : 59KD

Product Images



Western Blot analysis of various cells using Phospho-c-Src (Y529) Polyclonal Antibody diluted at 1 : 2000



Western Blot analysis of COS7 cells using Phospho-c-Src (Y529) Polyclonal Antibody diluted at 1 : 2000