

Cyclin B1 (phospho Ser126) Polyclonal Antibody

Catalog_no :	AP0079
Applications :	WB,IHC-p,ELISA
Reactivity :	Human,Mouse,Rat
Category :	抗原抗体
Size :	100µg/50µg/20µg
Gene_name :	CCNB1
Protein_name :	G2/mitotic-specific cyclin-B1
Humangene_id	891
:	
Humanswissprot	P14635
_no :	
Mousegene_id :	268697
Mouseswissprot	P24860
_no :	
Ratgene_id :	25203
Ratswissprot_no	P30277
:	
Immunogen :	The antiserum was produced against synthesized peptide derived from human Cyclin B1 around the phosphorylation site of Ser126. AA range:91-140
Specificity :	Phospho-Cyclin B1 (S126) Polyclonal Antibody detects endogenous levels of Cyclin B1 protein only when phosphorylated at S126.
Formulation :	Liquid in PBS containing 50% glycerol, 0.5% BSA and 0.02% sodium azide.
Source :	Rabbit
Dilution :	Western Blot: 1/500 - 1/2000. Immunohistochemistry: 1/100 - 1/300. ELISA: 1/5000. Not yet tested in other applications.
Purification :	The antibody was affinity-purified from rabbit antiserum by affinity-chromatography using epitope-specific immunogen.
Concentration :	1 mg/ml
Storage_stability	-20°C/1 year
:	

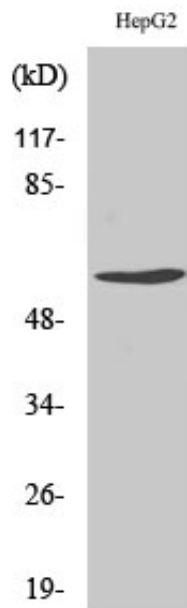


Msd : MSDS_Antibody.pdf

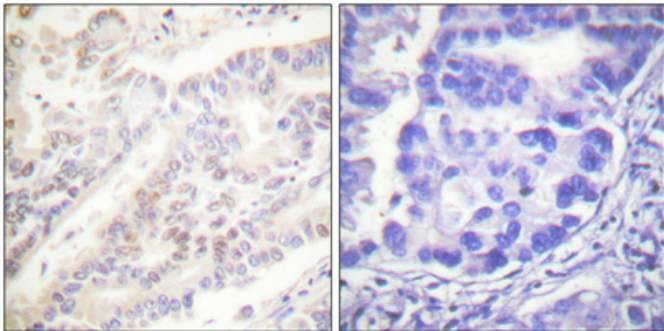
Other_name : CCNB1; CCNB; G2/mitotic-specific cyclin-B1

Molecular Weight : 60KD

Product Images



Western Blot analysis of various cells using Phospho-Cyclin B1 (S126) Polyclonal Antibody



Immunohistochemical analysis of paraffin-embedded Human lung cancer. Antibody was diluted at 1:100(4°, overnight). High-pressure and temperature Tris-EDTA, pH8.0 was used for antigen retrieval. Negative control (right) obtained from antibody was pre-absorbed by immunogen peptide.