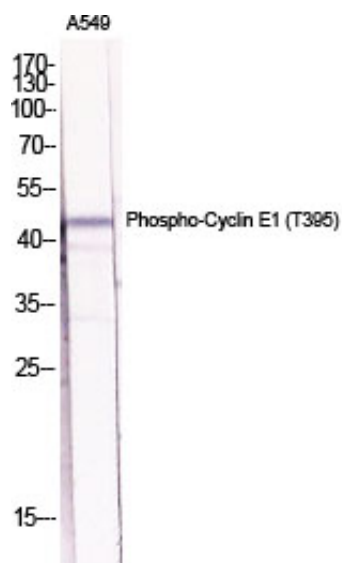


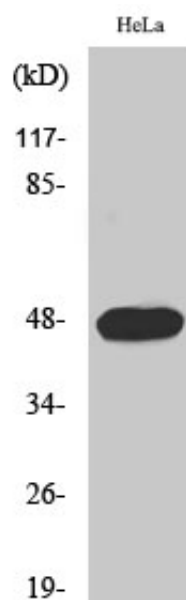
Cyclin E1 (phospho Thr395) Polyclonal Antibody

Catalog_no :	AP0081
Applications :	WB,IHC-p,ELISA
Reactivity :	Human
Category :	抗原抗体
Size :	100µg/50µg/20µg
Gene_name :	CCNE1
Protein_name :	G1/S-specific cyclin-E1
Humangene_id :	898
Humanswissprot_no :	P24864
Immunogen :	The antiserum was produced against synthesized peptide derived from human Cyclin E1 around the phosphorylation site of Thr395. AA range:361-410
Specificity :	Phospho-Cyclin E1 (T395) Polyclonal Antibody detects endogenous levels of Cyclin E1 protein only when phosphorylated at T395.
Formulation :	Liquid in PBS containing 50% glycerol, 0.5% BSA and 0.02% sodium azide.
Source :	Rabbit
Dilution :	Western Blot: 1/500 - 1/2000. Immunohistochemistry: 1/100 - 1/300. ELISA: 1/10000. Not yet tested in other applications.
Purification :	The antibody was affinity-purified from rabbit antiserum by affinity-chromatography using epitope-specific immunogen.
Concentration :	1 mg/ml
Storage_stability :	-20°C/1 year
Msds :	MSDS_Antibody.pdf
Other_name :	CCNE1; CCNE; G1/S-specific cyclin-E1
Molecular Weight :	48KD

Product Images



Western Blot analysis of various cells using Phospho-Cyclin E1 (T395) Polyclonal Antibody diluted at 1 : 2000



Western Blot analysis of HeLa cells using Phospho-Cyclin E1 (T395) Polyclonal Antibody diluted at 1 : 2000