

Dok-1 (phospho Tyr362) Polyclonal Antibody

Catalog_no :	AP0084
Applications :	WB,IF,ELISA
Reactivity :	Human,Mouse,Rat
Category :	抗原抗体
Size :	100µg/50µg/20µg
Gene_name :	DOK1
Protein_name :	Docking protein 1
Humangene_id :	1796
Humanswissprot_no :	Q99704
Mousegene_id :	13448
Mouseswissprot_no :	P97465
Ratgene_id :	312477
Ratswissprot_no :	Q4QQV2
Immunogen :	The antiserum was produced against synthesized peptide derived from human p62 Dok around the phosphorylation site of Tyr362. AA range:329-378
Specificity :	Phospho-Dok-1 (Y362) Polyclonal Antibody detects endogenous levels of Dok-1 protein only when phosphorylated at Y362.
Formulation :	Liquid in PBS containing 50% glycerol, 0.5% BSA and 0.02% sodium azide.
Source :	Rabbit
Dilution :	Western Blot: 1/500 - 1/2000. Immunofluorescence: 1/200 - 1/1000. ELISA: 1/10000. Not yet tested in other applications.
Purification :	The antibody was affinity-purified from rabbit antiserum by affinity-chromatography using epitope-specific immunogen.
Concentration :	1 mg/ml
Storage_stability :	-20°C/1 year

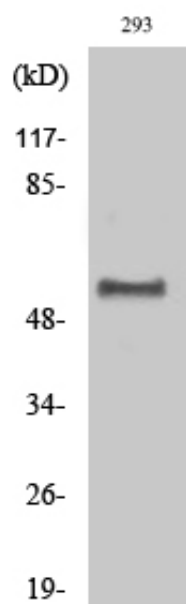


Msd : MSDS_Antibody.pdf

Other_name : DOK1; Docking protein 1; Downstream of tyrosine kinase 1; p62(dok); pp62

Molecular Weight : 55KD

Product Images



Western Blot analysis of various cells using Phospho-Dok-1 (Y362) Polyclonal Antibody