



## Dok-2 (phospho Tyr299) Polyclonal Antibody

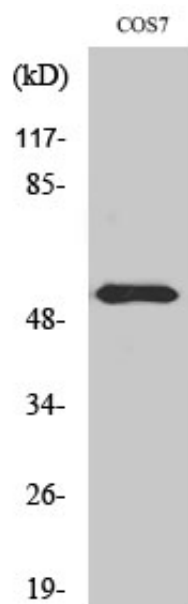
Catalog_no :	AP0085
Applications :	WB,IF,ELISA
Reactivity :	Human,Mouse,Monkey
Category :	抗原抗体
Size :	100µg/50µg/20µg
Gene_name :	DOK2
Protein_name :	Docking protein 2
Humangene_id :	<a href="#">9046</a>
Humanswissprot_no :	<a href="#">O60496</a>
Mousegene_id :	<a href="#">13449</a>
Mouseswissprot_no :	<a href="#">O70469</a>
Immunogen :	The antiserum was produced against synthesized peptide derived from human p56 Dok-2 around the phosphorylation site of Tyr299. AA range:266-315
Specificity :	Phospho-Dok-2 (Y299) Polyclonal Antibody detects endogenous levels of Dok-2 protein only when phosphorylated at Y299.
Formulation :	Liquid in PBS containing 50% glycerol, 0.5% BSA and 0.02% sodium azide.
Source :	Rabbit
Dilution :	Western Blot: 1/500 - 1/2000. Immunofluorescence: 1/200 - 1/1000. ELISA: 1/20000. Not yet tested in other applications.
Purification :	The antibody was affinity-purified from rabbit antiserum by affinity-chromatography using epitope-specific immunogen.
Concentration :	1 mg/ml
Storage_stability :	-20°C/1 year
Msds :	<a href="#">MSDS_Antibody.pdf</a>
Other_name :	DOK2; Docking protein 2; Downstream of tyrosine kinase 2; p56(dok-2)
Molecular	48KD



Weight :

---

## Product Images



Western Blot analysis of various cells using Phospho-Dok-2 (Y299) Polyclonal Antibody