

EGFR (phospho Thr693) Polyclonal Antibody

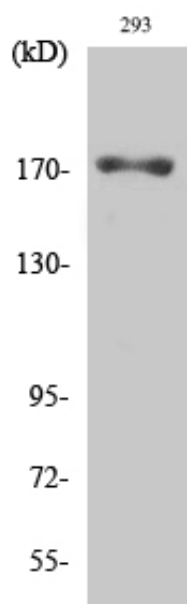
| | |
|---------------------|--|
| Catalog_no : | AP0087 |
| Applications : | WB,IHC-p,IF,ELISA |
| Reactivity : | Human,Mouse,Rat |
| Category : | 抗原抗体 |
| Size : | 100µg/50µg/20µg |
| Gene_name : | EGFR |
| Protein_name : | Epidermal growth factor receptor |
| Humangene_id : | 1956 |
| Humanswissprot_no : | P00533 |
| Mousegene_id : | 13649 |
| Mouseswissprot_no : | Q01279 |
| Immunogen : | The antiserum was produced against synthesized peptide derived from human EGFR around the phosphorylation site of Thr693. AA range:661-710 |
| Specificity : | Phospho-EGFR (T693) Polyclonal Antibody detects endogenous levels of EGFR protein only when phosphorylated at T693. |
| Formulation : | Liquid in PBS containing 50% glycerol, 0.5% BSA and 0.02% sodium azide. |
| Source : | Rabbit |
| Dilution : | Western Blot: 1/500 - 1/2000. Immunohistochemistry: 1/100 - 1/300. Immunofluorescence: 1/200 - 1/1000. ELISA: 1/40000. Not yet tested in other applications. |
| Purification : | The antibody was affinity-purified from rabbit antiserum by affinity-chromatography using epitope-specific immunogen. |
| Concentration : | 1 mg/ml |
| Storage_stability : | -20°C/1 year |
| Msds : | MSDS_Antibody.pdf |
| Other_name : | EGFR; ERBB; ERBB1; HER1; Epidermal growth factor receptor; Proto-oncogene c-ErbB-1; Receptor tyrosine-protein kinase erbB-1 |



Molecular
Weight :

180KD,134KD

Product Images



Western Blot analysis of various cells using Phospho-EGFR (T693) Polyclonal Antibody