



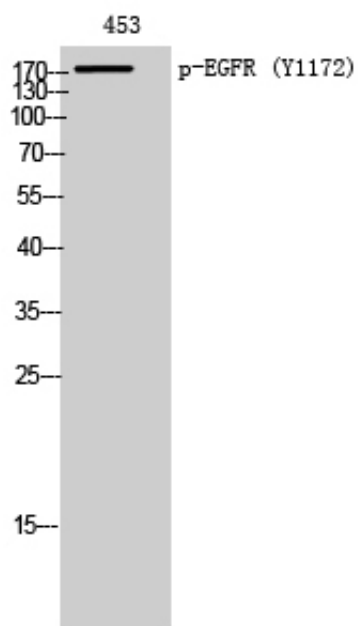
EGFR (phospho Tyr1172) Polyclonal Antibody

Catalog_no :	AP0090
Applications :	WB,ELISA
Reactivity :	Human,Mouse,Rat
Category :	抗原抗体
Size :	100µg/50µg/20µg
Gene_name :	EGFR
Protein_name :	Epidermal growth factor receptor
Humangene_id :	1956
Humanswissprot_no :	P00533
Mousegene_id :	13649
Mouseswissprot_no :	Q01279
Immunogen :	The antiserum was produced against synthesized peptide derived from human EGFR around the phosphorylation site of Tyr1172. AA range:1139-1188
Specificity :	Phospho-EGFR (Y1172) Polyclonal Antibody detects endogenous levels of EGFR protein only when phosphorylated at Y1172.
Formulation :	Liquid in PBS containing 50% glycerol, 0.5% BSA and 0.02% sodium azide.
Source :	Rabbit
Dilution :	Western Blot: 1/500 - 1/2000. ELISA: 1/10000. Not yet tested in other applications.
Purification :	The antibody was affinity-purified from rabbit antiserum by affinity-chromatography using epitope-specific immunogen.
Concentration :	1 mg/ml
Storage_stability :	-20°C/1 year
Msds :	MSDS_Antibody.pdf
Other_name :	EGFR; ERBB; ERBB1; HER1; Epidermal growth factor receptor; Proto-oncogene c-ErbB-1; Receptor tyrosine-protein kinase erbB-1
Molecular	140KD



Weight :

Product Images



Western Blot analysis of 453 cells using Phospho-EGFR (Y1172) Polyclonal Antibody diluted at 1 : 2000