

eIF2 α (phospho Ser51) Polyclonal Antibody

Catalog_no :	AP0093
Applications :	IF,WB,IHC-p,ELISA
Reactivity :	Human,Mouse,Rat
Category :	抗原抗体
Size :	100 μ g/50 μ g/20 μ g
Gene_name :	EIF2S1
Protein_name :	Eukaryotic translation initiation factor 2 subunit 1
Humangene_id	1965
:	
Humanswissprot	P05198
_no :	
Mousegene_id :	13665
Mouseswissprot	Q6ZWX6
_no :	
Ratgene_id :	54318
Ratswissprot_no	P68101
:	
Immunogen :	The antiserum was produced against synthesized peptide derived from human eIF2 alpha around the phosphorylation site of Ser51. AA range:21-70
Specificity :	Phospho-eIF2 α (S51) Polyclonal Antibody detects endogenous levels of eIF2 α protein only when phosphorylated at S51.
Formulation :	Liquid in PBS containing 50% glycerol, 0.5% BSA and 0.02% sodium azide.
Source :	Rabbit
Dilution :	IF: 1:50-200 Western Blot: 1/500 - 1/2000. Immunohistochemistry: 1/100 - 1/300. ELISA: 1/10000. Not yet tested in other applications.
Purification :	The antibody was affinity-purified from rabbit antiserum by affinity-chromatography using epitope-specific immunogen.
Concentration :	1 mg/ml
Storage_stability	-20°C/1 year
:	

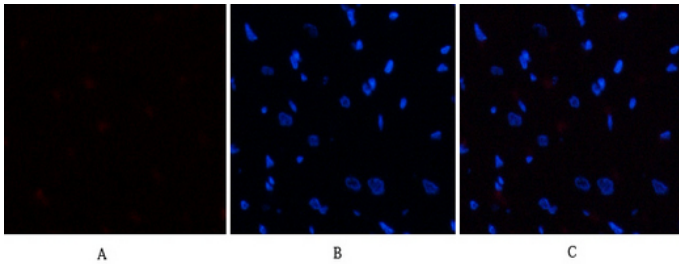


MsdS : MSDS_Antibody.pdf

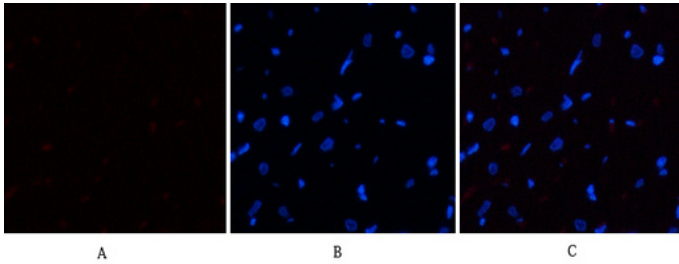
Other_name : EIF2S1; EIF2A; Eukaryotic translation initiation factor 2 subunit 1; Eukaryotic translation initiation factor 2 subunit alpha; eIF-2-alpha; eIF-2A; eIF-2alpha

Molecular Weight : 38KD

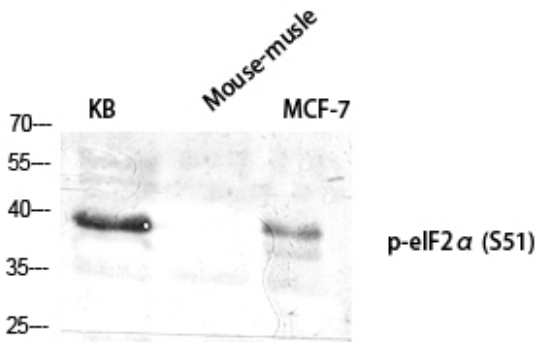
Product Images



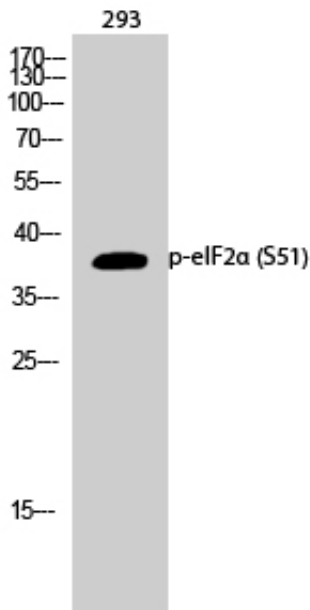
Immunofluorescence analysis of rat-heart tissue. 1,eIF2 α (phospho Ser51) Polyclonal Antibody(red) was diluted at 1:200(4°C,overnight). 2, Cy3 labeled Secondary antibody was diluted at 1:300(room temperature, 50min).3, Picture B: DAPI(blue) 10min. Picture A:Target. Picture B: DAPI. Picture C: merge of A+B



Immunofluorescence analysis of rat-heart tissue. 1,eIF2 α (phospho Ser51) Polyclonal Antibody(red) was diluted at 1:200(4°C,overnight). 2, Cy3 labeled Secondary antibody was diluted at 1:300(room temperature, 50min).3, Picture B: DAPI(blue) 10min. Picture A:Target. Picture B: DAPI. Picture C: merge of A+B



Western Blot analysis of various cells using Phospho-eIF2 α (S51) Polyclonal Antibody diluted at 1 : 2000



Western Blot analysis of 293 cells using Phospho-eIF2 α (S51) Polyclonal Antibody diluted at 1 : 2000