

eIF4E (phospho Ser209) Polyclonal Antibody

Catalog_no :	AP0094
Applications :	WB,IHC-p,ELISA
Reactivity :	Human,Mouse,Rat
Category :	抗原抗体
Size :	100µg/50µg/20µg
Gene_name :	EIF4E
Protein_name :	Eukaryotic translation initiation factor 4E
Humangene_id :	1977
Humanswissprot_no :	P06730
Mousegene_id :	13684
Mouseswissprot_no :	P63073
Ratgene_id :	117045
Ratswissprot_no :	P63074
Immunogen :	The antiserum was produced against synthesized peptide derived from human eIF4E around the phosphorylation site of Ser209. AA range:168-217
Specificity :	Phospho-eIF4E (S209) Polyclonal Antibody detects endogenous levels of eIF4E protein only when phosphorylated at S209.
Formulation :	Liquid in PBS containing 50% glycerol, 0.5% BSA and 0.02% sodium azide.
Source :	Rabbit
Dilution :	Western Blot: 1/500 - 1/2000. Immunohistochemistry: 1/100 - 1/300. ELISA: 1/20000. Not yet tested in other applications.
Purification :	The antibody was affinity-purified from rabbit antiserum by affinity-chromatography using epitope-specific immunogen.
Concentration :	1 mg/ml
Storage_stability :	-20°C/1 year

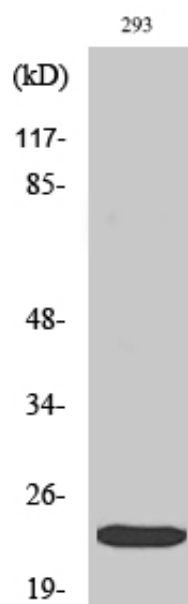


MsdS : [MSDS_Antibody.pdf](#)

Other_name : EIF4E; EIF4EL1; EIF4F; Eukaryotic translation initiation factor 4E; eIF-4E; eIF4E; eIF-4F 25 kDa subunit; mRNA cap-binding protein

Molecular Weight : 25KD

Product Images



Western Blot analysis of various cells using Phospho-eIF4E (S209) Polyclonal Antibody