



## EphA2 (phospho Tyr588) Polyclonal Antibody

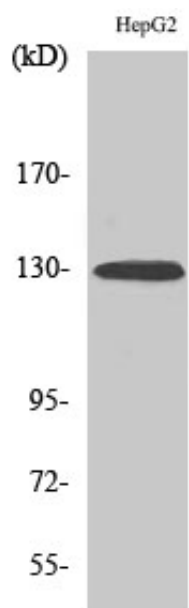
|                   |   |
|-------------------|---|
| Catalog_no :      | AP0098  |
| Applications :    | WB,ELISA  |
| Reactivity :      | Human,Mouse   |
| Category :        | 抗原抗体  |
| Size :            | 100µg/50µg/20µg   |
| Gene_name :       | EPHA2   |
| Protein_name :    | Ephrin type-A receptor 2  |
| Humangene_id      | <a href="#">1969</a>  |
| :                 |   |
| Humanswissprot    | <a href="#">P29317</a>  |
| _no :             |   |
| Mousegene_id :    | <a href="#">13836</a>   |
| Mouseswissprot    | <a href="#">Q03145</a>  |
| _no :             |   |
| Immunogen :       | Synthesized phospho-peptide around the phosphorylation site of human EphA2 (phospho Tyr588)                           |
| Specificity :     | Phospho-EphA2 (Y588) Polyclonal Antibody detects endogenous levels of EphA2 protein only when phosphorylated at Y588. |
| Formulation :     | Liquid in PBS containing 50% glycerol, 0.5% BSA and 0.02% sodium azide.   |
| Source :          | Rabbit  |
| Dilution :        | Western Blot: 1/500 - 1/2000. ELISA: 1/10000. Not yet tested in other applications.                                   |
| Purification :    | The antibody was affinity-purified from rabbit antiserum by affinity-chromatography using epitope-specific immunogen. |
| Concentration :   | 1 mg/ml   |
| Storage_stability | -20°C/1 year  |
| :                 |   |
| Msds :            | MSDS_Antibody.pdf   |
| Other_name :      | EPHA2; ECK; Ephrin type-A receptor 2; Epithelial cell kinase; Tyrosine-protein kinase receptor ECK                    |
| Molecular         | 130KD   |



Weight :

---

## Product Images



Western Blot analysis of various cells using Phospho-EphA2 (Y588) Polyclonal Antibody