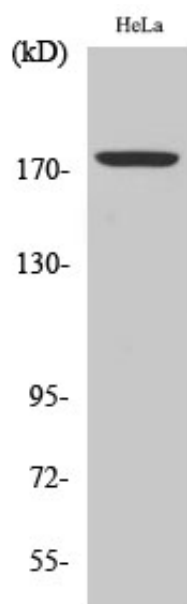


Erbin (phospho Tyr1104) Polyclonal Antibody

Catalog_no :	AP0099
Applications :	WB,ELISA
Reactivity :	Human
Category :	抗原抗体
Size :	100µg/50µg/20µg
Gene_name :	ERBB2IP
Protein_name :	Protein LAP2
Humangene_id :	55914
Humanswissprot_no :	Q96RT1
Immunogen :	Synthesized phospho-peptide around the phosphorylation site of human Erbin (phospho Tyr1104)
Specificity :	Phospho-Erbin (Y1104) Polyclonal Antibody detects endogenous levels of Erbin protein only when phosphorylated at Y1104.
Formulation :	Liquid in PBS containing 50% glycerol, 0.5% BSA and 0.02% sodium azide.
Source :	Rabbit
Dilution :	Western Blot: 1/500 - 1/2000. ELISA: 1/10000. Not yet tested in other applications.
Purification :	The antibody was affinity-purified from rabbit antiserum by affinity-chromatography using epitope-specific immunogen.
Concentration :	1 mg/ml
Storage_stability :	-20°C/1 year
Msds :	MSDS_Antibody.pdf
Other_name :	ERBB2IP; ERBIN; KIAA1225; LAP2; Protein LAP2; Densin-180-like protein; Erbb2-interacting protein; Erbin
Molecular Weight :	172KD

Product Images



Western Blot analysis of various cells using Phospho-Erbin (Y1104) Polyclonal Antibody