

ER α (phospho Ser106) Polyclonal Antibody

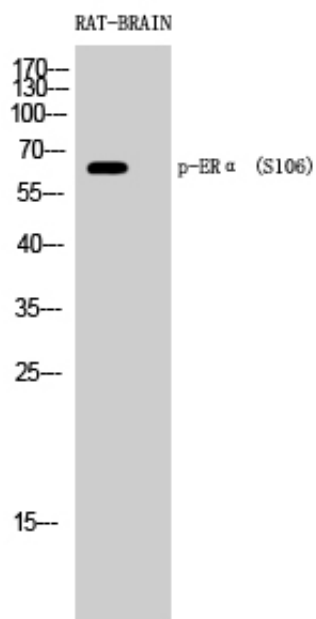
Catalog_no :	AP0103
Applications :	WB,IHC-p,IF,ELISA
Reactivity :	Human,Mouse,Rat
Category :	抗原抗体
Size :	100 μ g/50 μ g/20 μ g
Gene_name :	ESR1
Protein_name :	Estrogen receptor
Humangene_id :	2099
Humanswissprot_no :	P03372
Mousegene_id :	13982
Mouseswissprot_no :	P19785
Ratgene_id :	24890
Ratswissprot_no :	P06211
Immunogen :	The antiserum was produced against synthesized peptide derived from human Estrogen Receptor-alpha around the phosphorylation site of Ser106. AA range:71-120
Specificity :	Phospho-ER α (S106) Polyclonal Antibody detects endogenous levels of ER α protein only when phosphorylated at S106.
Formulation :	Liquid in PBS containing 50% glycerol, 0.5% BSA and 0.02% sodium azide.
Source :	Rabbit
Dilution :	Western Blot: 1/500 - 1/2000. Immunohistochemistry: 1/100 - 1/300. Immunofluorescence: 1/200 - 1/1000. ELISA: 1/40000. Not yet tested in other applications.
Purification :	The antibody was affinity-purified from rabbit antiserum by affinity-chromatography using epitope-specific immunogen.
Concentration :	1 mg/ml
Storage_stability :	-20°C/1 year



Msd : [MSDS_Antibody.pdf](#)

Other_name : [ESR1; ESR; NR3A1; Estrogen receptor; ER; ER-alpha; Estradiol receptor; Nuclear receptor subfamily 3 group A member 1](#)

Product Images



Western Blot analysis of RAT-BRAIN cells using Phospho-ER α (S106) Polyclonal Antibody diluted at 1 : 500