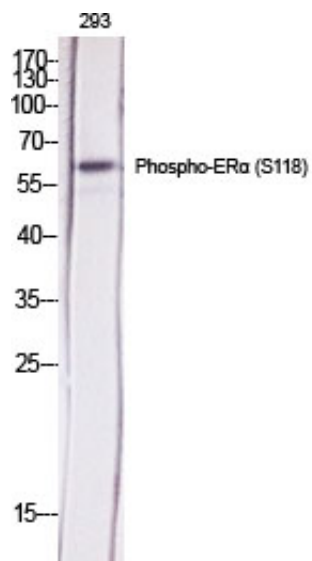


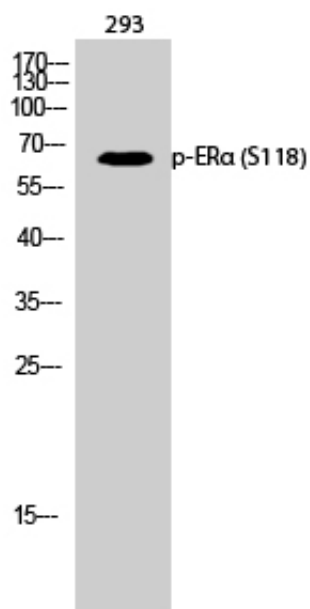
ER α (phospho Ser118) Polyclonal Antibody

| | |
|---------------------|--|
| Catalog_no : | AP0104 |
| Applications : | WB,IHC-p,ELISA |
| Reactivity : | Human,Mouse |
| Category : | 抗原抗体 |
| Size : | 100 μ g/50 μ g/20 μ g |
| Gene_name : | ESR1 |
| Protein_name : | Estrogen receptor |
| Humangene_id : | 2099 |
| Humanswissprot_no : | P03372 |
| Mousegene_id : | 13982 |
| Mouseswissprot_no : | P19785 |
| Immunogen : | The antiserum was produced against synthesized peptide derived from human Estrogen Receptor-alpha around the phosphorylation site of Ser118. AA range:91-140 |
| Specificity : | Phospho-ER α (S118) Polyclonal Antibody detects endogenous levels of ER α protein only when phosphorylated at S118. |
| Formulation : | Liquid in PBS containing 50% glycerol, 0.5% BSA and 0.02% sodium azide. |
| Source : | Rabbit |
| Dilution : | Western Blot: 1/500 - 1/2000. Immunohistochemistry: 1/100 - 1/300. ELISA: 1/20000. Not yet tested in other applications. |
| Purification : | The antibody was affinity-purified from rabbit antiserum by affinity-chromatography using epitope-specific immunogen. |
| Concentration : | 1 mg/ml |
| Storage_stability : | -20°C/1 year |
| Msds : | MSDS_Antibody.pdf |
| Other_name : | ESR1; ESR; NR3A1; Estrogen receptor; ER; ER-alpha; Estradiol receptor; Nuclear receptor subfamily 3 group A member 1 |

Product Images



Western Blot analysis of various cells using Phospho-ERα (S118) Polyclonal Antibody diluted at 1 : 2000



Western Blot analysis of 293 cells using Phospho-ERα (S118) Polyclonal Antibody diluted at 1 : 2000