

## Ezrin (phospho Thr566) Polyclonal Antibody

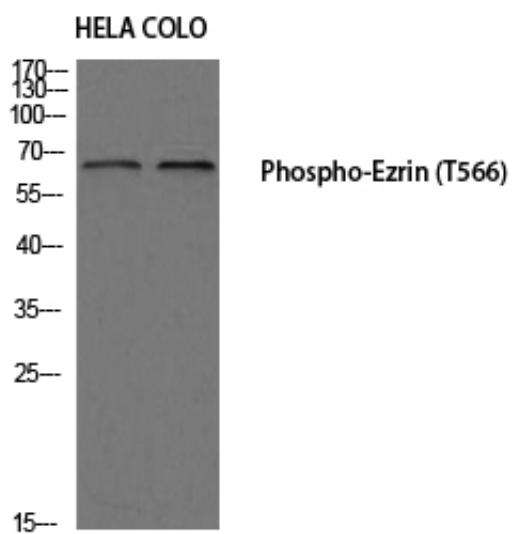
Catalog_no :	AP0106
Applications :	WB,ELISA
Reactivity :	Human,Mouse,Rat
Category :	抗原抗体
Size :	100µg/50µg/20µg
Gene_name :	EZR
Protein_name :	Ezrin
Humangene_id :	<a href="#">7430</a>
Humanswissprot_no :	<a href="#">P15311</a>
Mousegene_id :	<a href="#">22350</a>
Mouseswissprot_no :	<a href="#">P26040</a>
Ratgene_id :	<a href="#">54319</a>
Ratswissprot_no :	<a href="#">P31977</a>
Immunogen :	The antiserum was produced against synthesized peptide derived from human Ezrin around the phosphorylation site of Thr566. AA range:534-583
Specificity :	Phospho-Ezrin (T566) Polyclonal Antibody detects endogenous levels of Ezrin protein only when phosphorylated at T566.
Formulation :	Liquid in PBS containing 50% glycerol, 0.5% BSA and 0.02% sodium azide.
Source :	Rabbit
Dilution :	Western Blot: 1/500 - 1/2000. ELISA: 1/20000. Not yet tested in other applications.
Purification :	The antibody was affinity-purified from rabbit antiserum by affinity-chromatography using epitope-specific immunogen.
Concentration :	1 mg/ml
Storage_stability :	-20°C/1 year
Msds :	MSDS_Antibody.pdf



Other\_name : EZR; VIL2; Ezrin; Cytovillin; Villin-2; p81

Molecular Weight : 69KD

## Product Images



Western blot analysis of HELA COLO using Phospho-Ezrin (T566) antibody. Antibody was diluted at 1:1000