

## Flk-1 (phospho Tyr1175) Polyclonal Antibody

Catalog_no :	AP0110
Applications :	WB,IHC-p,ELISA
Reactivity :	Human,Mouse,Rat
Category :	抗原抗体
Size :	100µg/50µg/20µg
Gene_name :	KDR
Protein_name :	Vascular endothelial growth factor receptor 2
Humangene_id :	<a href="#">3791</a>
Humanswissprot_no :	<a href="#">P35968</a>
Mouseswissprot_no :	<a href="#">P35918</a>
Ratgene_id :	<a href="#">25589</a>
Ratswissprot_no :	<a href="#">O08775</a>
Immunogen :	The antiserum was produced against synthesized peptide derived from human VEGFR2 around the phosphorylation site of Tyr1175. AA range:1141-1190
Specificity :	Phospho-Flk-1 (Y1175) Polyclonal Antibody detects endogenous levels of Flk-1 protein only when phosphorylated at Y1175.
Formulation :	Liquid in PBS containing 50% glycerol, 0.5% BSA and 0.02% sodium azide.
Source :	Rabbit
Dilution :	Western Blot: 1/500 - 1/2000. Immunohistochemistry: 1/100 - 1/300. ELISA: 1/10000. Not yet tested in other applications.
Purification :	The antibody was affinity-purified from rabbit antiserum by affinity-chromatography using epitope-specific immunogen.
Concentration :	1 mg/ml
Storage_stability :	-20°C/1 year
Msds :	<a href="#">MSDS_Antibody.pdf</a>



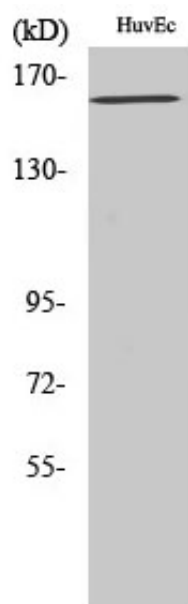
Other\_name : KDR; FLK1; VEGFR2; Vascular endothelial growth factor receptor 2; VEGFR-2; Fetal liver kinase 1; FLK-1; Kinase insert domain receptor; KDR; Protein-tyrosine kinase receptor flk-1; CD antigen CD309

---

Molecular Weight : 152KD

---

## Product Images



Western Blot analysis of various cells using Phospho-Flk-1 (Y1175) Polyclonal Antibody diluted at 1 : 1000