

## FoxO1 (phospho Ser256) Polyclonal Antibody

Catalog_no :	AP0113
Applications :	WB,IHC-p,IF,ELISA
Reactivity :	Human,Mouse,Rat
Category :	抗原抗体
Size :	100µg/50µg/20µg
Gene_name :	FOXO1
Protein_name :	Forkhead box protein O1
Humangene_id :	<a href="#">2308</a>
Humanswissprot_no :	<a href="#">Q12778</a>
Mousegene_id :	<a href="#">56458</a>
Mouseswissprot_no :	<a href="#">Q9R1E0</a>
Ratgene_id :	<a href="#">84482</a>
Ratswissprot_no :	<a href="#">G3V7R4</a>
Immunogen :	The antiserum was produced against synthesized peptide derived from human FKHR around the phosphorylation site of Ser256. AA range:223-272
Specificity :	Phospho-FoxO1 (S256) Polyclonal Antibody detects endogenous levels of FoxO1 protein only when phosphorylated at S256.
Formulation :	Liquid in PBS containing 50% glycerol, 0.5% BSA and 0.02% sodium azide.
Source :	Rabbit
Dilution :	Western Blot: 1/500 - 1/2000. Immunohistochemistry: 1/100 - 1/300. Immunofluorescence: 1/200 - 1/1000. ELISA: 1/20000. Not yet tested in other applications.
Purification :	The antibody was affinity-purified from rabbit antiserum by affinity-chromatography using epitope-specific immunogen.
Concentration :	1 mg/ml
Storage_stability :	-20°C/1 year

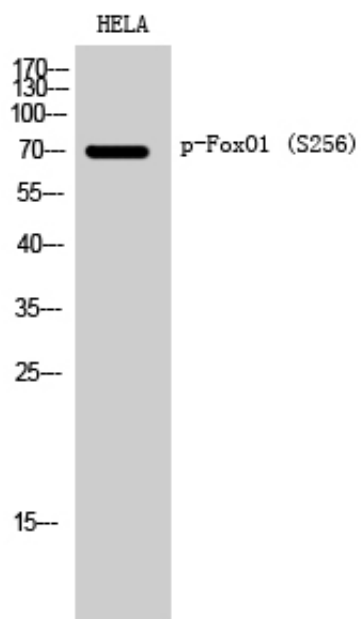


Msd : MSDS\_Antibody.pdf

Other\_name : FOXO1; FKHR; FOXO1A; Forkhead box protein O1; Forkhead box protein O1A; Forkhead in rhabdomyosarcoma

Molecular Weight : 82KD

## Product Images



Western Blot analysis of HELA cells using Phospho-FoxO1 (S256) Polyclonal Antibody diluted at 1 : 1000